

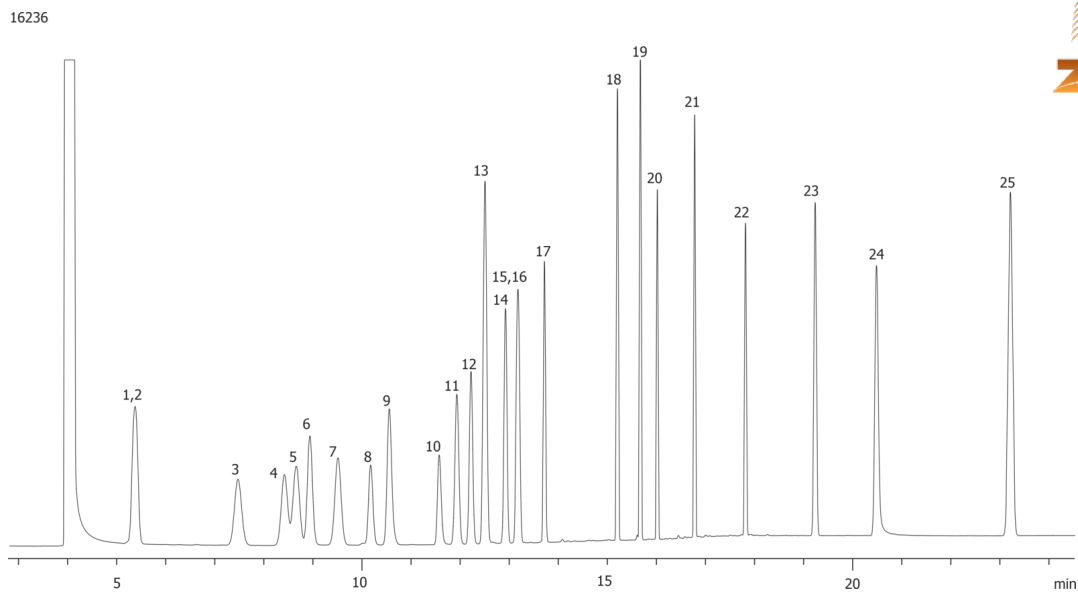
## Industrial Chemicals: Ethers on ZB-624

**Column:** Zebron™ ZB-624, GC Cap. Column 30 m x 0.53 mm x 3.00 μm, Ea  
**Phase:** 6% Cyanopropylphenyl 94% Dimethylpolysiloxane  
**Dimensions:** 30 meters x 0.53 mm x 3 μm  
**Order No:** 7HK-G005-36  
**Oven Profile:** 50 °C 8 min to 90 at 10 °C/min to 230 °C at 30 °C/min hold 10 min

**Carrier Gas:** Constant Flow Helium, 4 mL/min  
**Injection:** Split 10:1 1 μL @ 250°C  
**Detection:** Flame Ionization (FID) (300°C)  
**Analyst Note:** Concentration per compound 250 ppm in Carbon disulfide



Products used in this application:



## Industrial Chemicals: Ethers on ZB-624

### ANALYTES:

- 1 Ethyl ether
- 2 Ethyl vinyl ether
- 3 Methyl tert-butyl ether
- 4 2-Butyl methyl ether
- 5 Isopropyl ether
- 6 Allyl ethyl ether
- 7 tet-Butyl ethyl ether
- 8 1,3-Dioxolane
- 9 Tetrahydrofuran
- 10 Ethylene glycol dimethyl ether
- 11 Propyl ether
- 12 n-Butyl ethyl ether
- 13 Butyl vinyl ether
- 14 Tetrahydropyran
- 15 1,4-Dioxane
- 16 Acetal
- 17 Epichlorohydrin
- 18 Butyl ether
- 19 Allyl glycidil ether
- 20 Diethylene glycol dimethyl ether
- 21 Diethylene glycol diethyl ether
- 22 Triethylene glycol dimethyl ether
- 23 Diethylene glycol dibutyl ether
- 24 Di(ethyleneglycol) 2-ethyl hexyl ether
- 25 Benzyl ether

