

# GC Application

ID No.: 16246

## Ylang Ylang Oil on ZB-1

**Column:** Zebron<sup>™</sup> ZB-1, GC Cap. Column 30 m x 0.25 mm x 0.25 µm, Ea

**Phase:** 100% Dimethylpolysiloxane

**Dimensions:** 30 meters x 0.25 mm x 0.25 µm

**Order No:** 7HG-G001-11

**Oven Profile:** 40 °C for 2 min 80 °C at 10 °C/min to 220 °C at 5 °C/min

**Carrier Gas:** Constant Flow Helium, 0.8 mL/min

**Injection:** On-Column :1 0.1 µL @ 43°C

**Detection:** Mass Selective (MSD) (240°C)

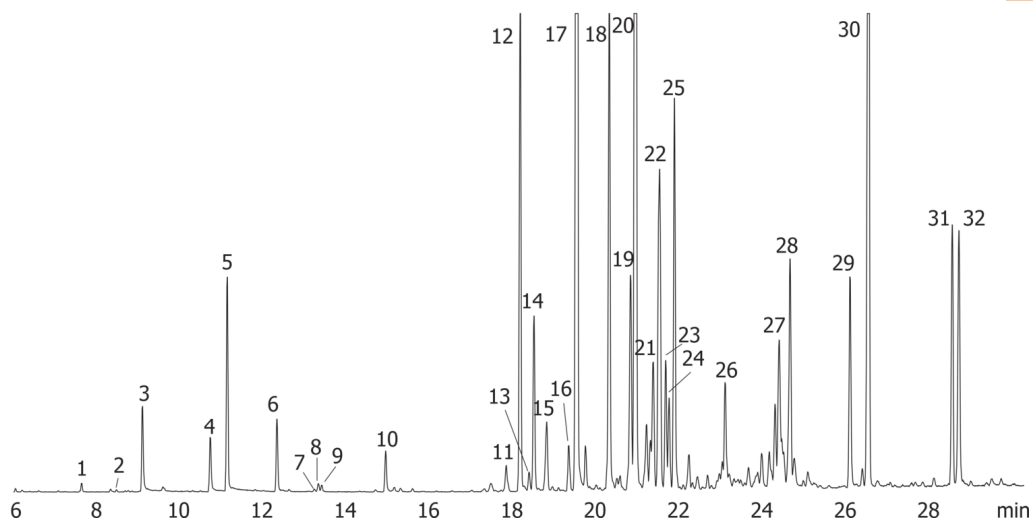
**Analyst Note:** 1000ppm Ylang Ylang oil in ethyl acetate



Products used in this application:



16246



## Ylang Ylang Oil on ZB-1

### ANALYTES:

- 1 a-Pinene
- 2 beta-Pinene
- 3 1-Methoxy-4-methylbenzene (p-cresyl methyl ether)
- 4 Methyl benzoate
- 5 Linalool
- 6 Benzyl acetate
- 7 Methyl salicylate
- 8 a-Terpineol
- 9 Anethole
- 10 Nerol
- 11 Cubebene
- 12 Geranyl acetate
- 13 Ylangene
- 14 Copaene
- 15 b-Elemene
- 16 Cinnamyl acetate
- 17 b-Caryophyllene
- 18 alpha-Caryophyllene
- 19 g-Muurolene
- 20 Germacrene D
- 21 a-Muurolol
- 22 Farnesene
- 23 gamma-Cadinene
- 24 Calamenene
- 25 d-Amorphene
- 26 Caryophyllene oxide
- 27 t-Cadinol
- 28 alpha-Cadinol
- 29 Farnesol
- 30 Benzyl benzoate
- 31 Farnesyl acetate
- 32 Benzyl salicylate

