

# HPLC Application

ID No.: 16318

## SPE of Tetracyclines from Honey Using Gemini 5u

**Column:** Gemini® 5 µm C18 110 Å, LC Column 150 x 3 mm, Ea

**Dimensions:** 150 x 3 mm ID

**Order No:** 00F-4435-Y0

**Elution Type:** Isocratic

**Eluent A:** 10 mM Oxalic acid

**Eluent B:** Acetonitrile

Gradient Profile:	Step No.	Time (min)	Pct A	Pct B
	1	0	80	20

**Flow Rate:** 0.8 mL/min

**Col. Temp.:** ambient

**Detection:** UV-Vis Abs.-Variable Wave.(UV) @ 365 nm (ambient)

**Analyst Note:** SecurityGuard™ Guard Cartridge System extends column lifetime.

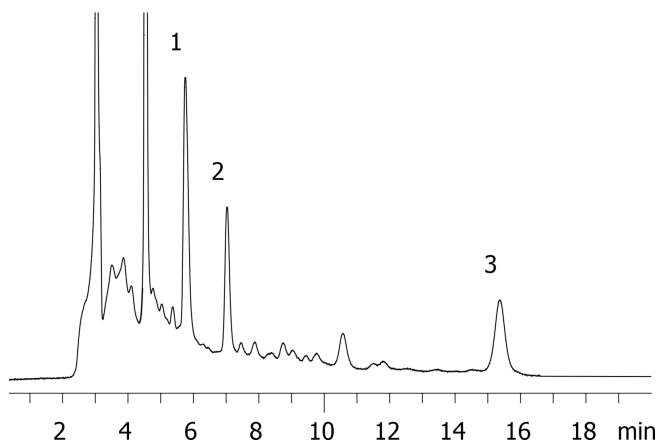
- SecurityGuard Cartridges, Gemini C18 4 x 2.0mm, 10/Pk Part No.: AJ0-7596

- Holder Part No.: KJ0-4282

16318



Products used in this application:



### ANALYTES:

- 1** Oxytetracycline  
Retention Time: 5.75 min
- 2** Tetracycline  
Retention Time: 7.03 min
- 3** Chlortetracycline  
Retention Time: 15.37 min

