

Carboxypeptidase B treated murine myeloma IgG1-k

Column: Jupiter® 5 µm C4 300 Å, LC Column 150 x 4.6 mm, Ea
Dimensions: 150 x 4.6 mm ID
Order No: 00F-4167-E0
Elution Type: Gradient
Eluent A: 0.1% TFA and 2% Acetonitrile in Water
Eluent B: 70% Acetonitrile, 20% Isopropanol, and 0.08% TFA in Water

Gradient Profile:	Step No.	Time (min)	Pct A	Pct B
	1	0	80	20
	2	20	10	90
	3	21	80	20
	4	25	80	20

Flow Rate: 1 mL/min

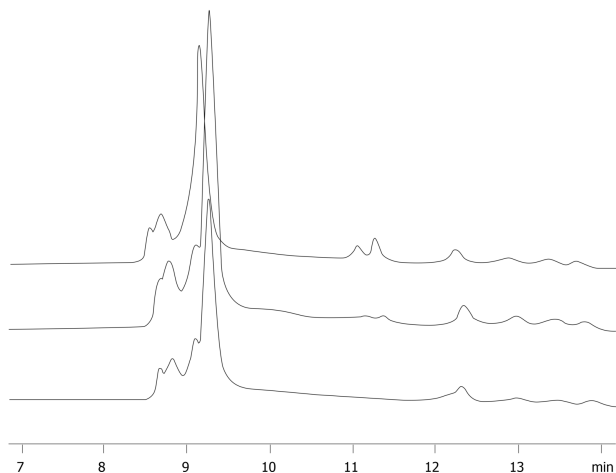
Col. Temp.: 55 °C

Detection: UV-Vis Abs.-Diode Array (PDA) @ 214 nm (55 °C)

Analyst Note: SecurityGuard™ Guard Cartridge System extends column lifetime.

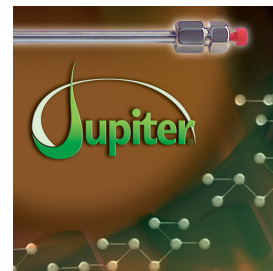
- SecurityGuard Cartridges, Widepore C4 4 x 3.0mm, 10/Pk Part No.: AJ0-4330
- Holder Part No.: KJ0-4282

16319



ANALYTES:

- 1 Mouse Myeloma IgG1-kappa



Products used in this application:

