

Food Industry FAMES on ZB-MR2

Column: Zebtron™ ZB-MultiResidue™-2, GC Cap. Column 30 m x 0.25 mm x 0.20 μm, Ea

Phase: Unknown or Proprietary

Dimensions: 30 meters x 0.25 mm x 0.2 μm

Order No: 7HG-G017-10

Oven Profile: 60 °C for 2 min to 160 °C at 13 °C/min. hold 5 min to 275 °C/min at 2 °C/min hold 2 min.

Carrier Gas: Constant Flow Helium, 2 mL/min

Injection: Split 5:1 1 μL @ 250°C

Detection: Flame Ionization (FID) (280°C)

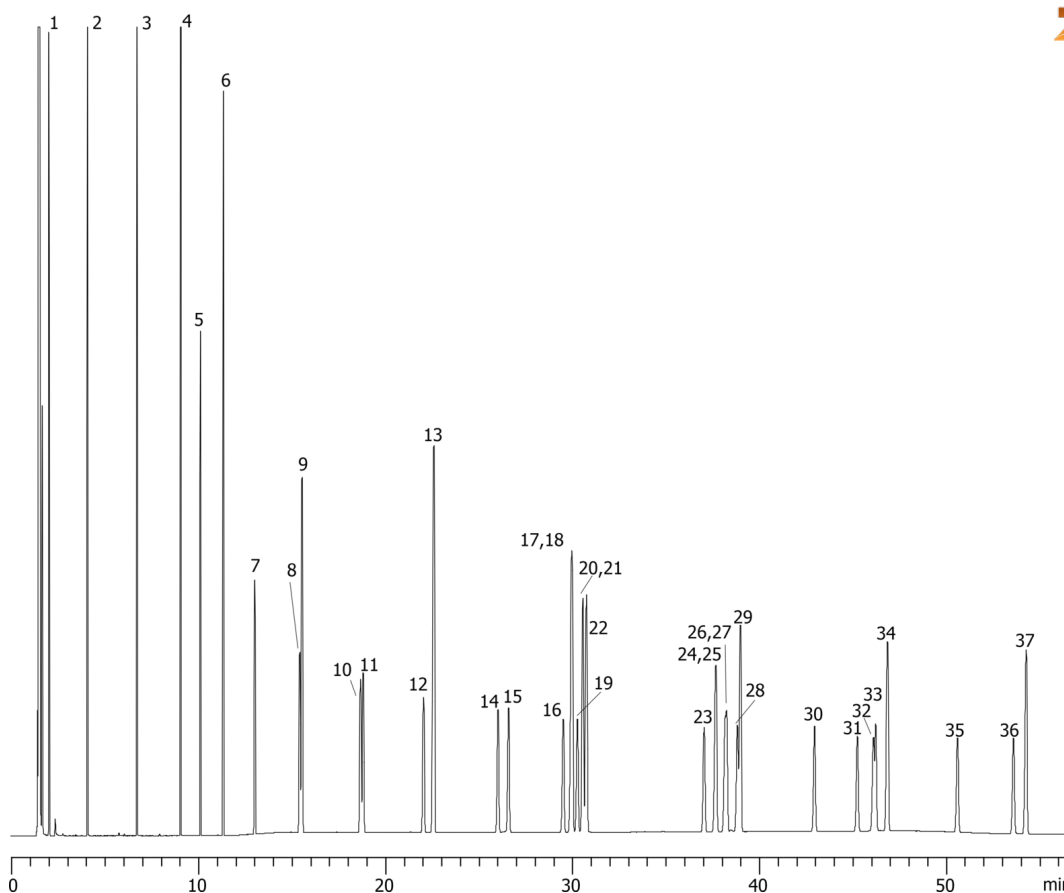
Analyst Note: Composition range of analytes in standard mix 2 - 4 %.



Products used in this application:



16330



Food Industry FAMES on ZB-MR2

ANALYTES:

- 1 Butyric acid methyl ester (C4:0)
- 2 Caproic acid methyl ester (C6:0)
- 3 Caprylic acid methyl ester (C8:0)
- 4 Capric acid methyl ester (C10:0)
- 5 Undecanoic acid methyl ester (C11:0)
- 6 Lauric acid methyl ester (C12:0)
- 7 Tridecanoic acid methyl ester (C13:0)
- 8 Myristoleic acid methyl ester (C14:1)
- 9 Myristic acid methyl ester (C14:0)
- 10 cis-10-Pentadecenoic acid methyl ester (C15:1)
- 11 Pentadecanoic acid methyl ester (C15:0)
- 12 Palmitoleic acid methyl ester (C16:1)
- 13 Palmitic acid methyl ester (C16:0)
- 14 cis-10-Heptadecenoic acid methyl ester (C17:1)
- 15 Heptanoic acid methyl ester (C17:0)
- 16 gamma-Linolenic acid methyl ester (C18:3n6)
- 17 Oleic acid methyl ester (C18:1n9c)
- 18 Linoleic acid methyl ester (C18:2n6c)
- 19 Elaidic acid methyl ester (C18:1n9t)
- 20 Linolelaidic acid methyl ester (C18:2n6t)
- 21 Linolenic acid methyl ester (C18:3n3)
- 22 Stearic acid methyl ester (C18:0)
- 23 Arachidonic acid methyl ester (C20:4n6)
- 24 cis-5,8,11,14,17-Eicosapentaenoic acid methyl ester (C20:5n3)
- 25 cis-8,11,14-Eicosatrienoic acid methyl ester (C20:3n6)
- 26 cis-11-Eicosenoic acid methyl ester (C20:1)
- 27 cis-11,14-Eicosadienoic acid methyl ester (C20:2)
- 28 cis-11,14,17-Eicosatrienoic acid methyl ester (C20:3n3)
- 29 Arachidic acid methyl ester (C20:0)
- 30 Heneicosanoic acid methyl ester (C21:0)
- 31 cis-4,7,10,13,16,19-Docosahexaenoic acid methyl ester (C22:6n3)
- 32 Euric acid methyl ester (C22:1n9)
- 33 cis-13,16-Docosadienoic acid methyl ester (C22:2)
- 34 Behenic acid methyl ester (C22:0)
- 35 Tricosanoic acid methyl ester (C23:0)
- 36 Nervonic acid methyl ester (C24:1)
- 37 Lignoceric acid methyl ester (C24:0)

