

HPLC Application

ID No.: 16340

Batch to Batch comparison using Water-Soluble Vitamins: Luna 5µm HILIC, pH 3.2

Column: Luna® 5 µm HILIC 200 Å, LC Column 150 x 4.6 mm, Ea

Dimensions: 150 x 4.6 mm ID

Order No: 00F-4450-E0

Elution Type: Gradient

Eluent A: Acetonitrile

Eluent B: 100mM Ammonium Formate pH 3.2

Eluent C: Water

Gradient Profile:	Step No.	Time (min)	Pct A	Pct B	Pct C
	1	0	90	10	0
	2	15	50	10	40

Flow Rate: 1 mL/min

Col. Temp.: ambient

Detection: UV-Vis Abs.-Diode Array (PDA) @ 260 nm (ambient)

Analyst Note: SecurityGuard™ Guard Cartridge System extends column lifetime.

- SecurityGuard Cartridges, HILIC 4 x 3.0 mm, 10/Pk Part No.: AJ0-8329

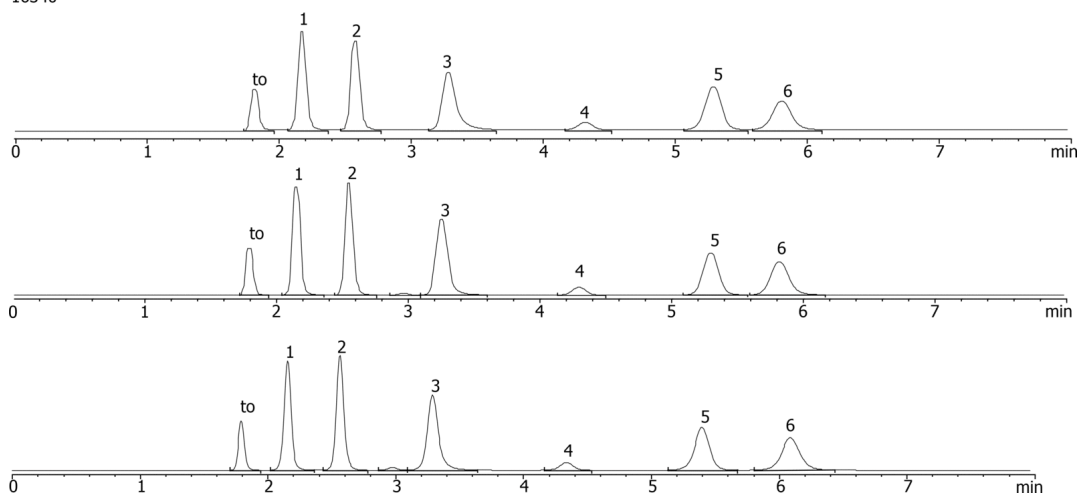
- Holder Part No.: KJ0-4282



Products used in this application:



16340



ANALYTES:

- 1 PABA
- 2 Nicotinamide
- 3 Riboflavin
- 4 Nicotinic acid
- 5 Pyridoxine
- 6 Thiamine

