

HPLC Application

ID No.: 16341

Batch to Batch comparison using Water-Soluble Vitamins: Luna 5 μ m HILIC, pH 4.7

Column: Luna[®] 5 μ m HILIC 200 \AA , LC Column 150 x 4.6 mm, Ea

Dimensions: 150 x 4.6 mm ID

Order No: 00F-4450-E0

Elution Type: Gradient

Eluent A: Acetonitrile

Eluent B: 100mM Ammonium Acetate pH 4.7

Eluent C: Water

| Gradient Profile: | Step No. | Time (min) | Pct A | Pct B | Pct C |
|-------------------|----------|------------|-------|-------|-------|
| | 1 | 0 | 90 | 10 | 0 |
| | 2 | 15 | 50 | 10 | 40 |

Flow Rate: 1 mL/min

Col. Temp.: ambient

Detection: UV-Vis Abs.-Diode Array (PDA) @ 260 nm (ambient)

Analyst Note: SecurityGuard[™] Guard Cartridge System extends column lifetime.

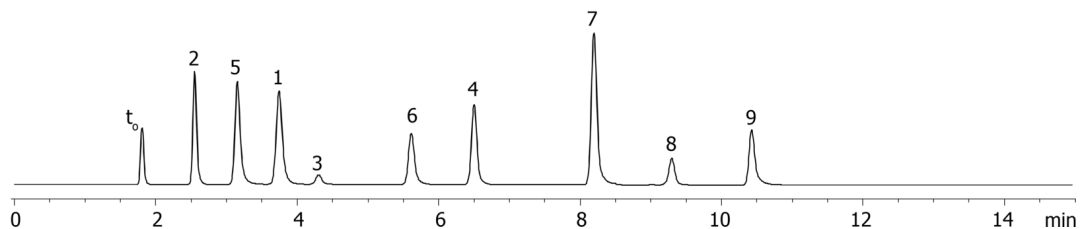
- SecurityGuard Cartridges, HILIC 4 x 3.0 mm, 10/Pk Part No.: AJ0-8329

- Holder Part No.: KJ0-4282

16341



Products used in this application:



ANALYTES:

- 1 PABA
- 2 Nicotinamide
- 3 Riboflavin
- 4 Nicotinic acid
- 5 Pyridoxine
- 6 Thiamine
- 7 Ascorbic acid
- 8 Vitamin B12
- 9 Folic acid

