

HPLC Application

ID No.: 16388

Polar Bases on Luna 5µm HILIC

Column: Luna® 5 µm HILIC 200 Å, LC Column 150 x 4.6 mm, Ea

Dimensions: 150 x 4.6 mm ID

Order No: 00F-4450-E0

Elution Type: Isocratic

Eluent A: Acetonitrile

Eluent B: 100mM Ammonium Formate, pH 3.2

Gradient Profile:	Step No.	Time (min)	Pct A	Pct B
	1	0	90	10

Flow Rate: 1 mL/min

Col. Temp.: ambient

Detection: UV-Vis Abs.-Variable Wave.(UV) @ 260 nm (ambient)

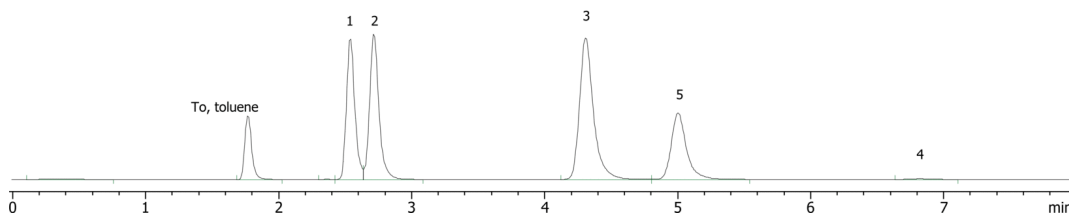
Detector Info: competitor comparison

Analyst Note: The pH of the aqueous buffer is specified. The pH in mixed organic was not measured.

16388



Products used in this application:



ANALYTES:

- 1 Thymine
- 2 Uracil
- 3 Adenine
- 4 Guanine
- 5 Cytosine

