

GC Application

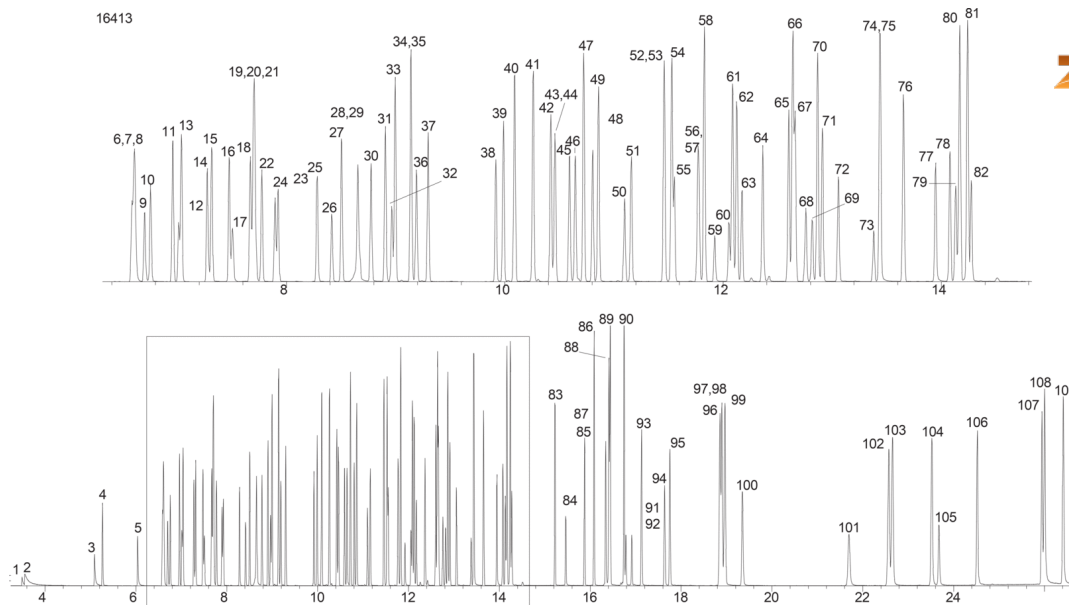
ID No.: 16413

EPA Method 8270C ZB-5MSi

Column: Zebtron™ ZB-5MSi, GC Cap. Column 30 m x 0.25 mm x 0.25 μm, Ea
Phase: 5% Phenyl 95% Dimethylpolysiloxane
Dimensions: 30 meters x 0.25 mm x 0.25 μm
Order No: 7HG-G018-11
Oven Profile: 40 °C for 2 min to 260 °C @ 15 °C/min for 5 min to 320 °C @ 15 °C/min for 2 min.
Carrier Gas: Constant Flow Helium, 1.5 mL/min
Injection: Splitless :1 1 μL @ 240°C
Detection: Mass Selective (MSD) (230°C)
Analyst Note: Analytes 100ppm in methylene chloride



Products used in this application:



EPA Method 8270C ZB-5MSi**ANALYTES:**

1 N-Nitrosodimethylamine	41 1-Methylnaphthalene	81 Anthracene
2 Pyridine	42 1,2,4,5-Tetrachlorobenzene	82 Dinoseb
3 Methylmethane sulfonate	43 Isosafrole-trans	83 Dibutyl phthalate
4 2-Fluorophenol	44 Hexachlorocyclopentadiene	84 4-Nitroquinoline-1-oxide
5 Ethyl methanesulfonate	45 2,4,6-Trichlorophenol	85 Isodrin
6 Aniline	46 2,4,5-Trichlorophenol	86 Fluoranthene
7 Phenol-d6	47 2-Fluorobiphenyl	87 Benzidine
8 Phenol	48 Isosafrole-cis	88 Pyrene-d10
9 bis(2-Chloroethyl)ether	49 2-Chloronaphthalene	89 Pyrene
10 2-Chlorophenol	50 2-Nitroaniline	90 p-Terphenyl-d14
11 1,3-Dichlorobenzene	51 1,4-Naphthoquinone	91 Aramite
12 1,4-Dichlorobenzene-d4	52 Dimethylphthalate	92 Aramite
13 1,4-Dichlorobenzene	53 1,3-Dinitrobenzene	93 Chlorobenzilate
14 Benzyl alcohol	54 Acenaphthylene	94 Kepone
15 1,2-Dichlorobenzene	55 2,6-Dinitrotoluene	95 Butylbenzyl phthalate
16 2-Methylphenol	56 3-Nitroaniline	96 Benz[a]anthracene
17 bis(2-Chloroisopropyl)ether	57 Acenaphthene-d10	97 3,3'-Dichlorobenzidine
18 Acetophenone	58 Acenaphthene	98 Chrysene-d12
19 4-Methylphenol	59 2,4-Dinitrophenol	99 Chrysene
20 3-Methylphenol	60 4-Nitrophenol	100 Di-n-octyl phthalate
21 N-Nitrosodi-n-propylamine	61 Dibenzofuran	101 bis(2-Ethylhexyl)phthalate
22 Hexachloroethane	62 Pentachlorobenzene	102 Benzo[b]fluoranthene
23 Nitrobenzene-d5	63 2,4-Dinitrotoluene	103 Benzo[k]fluoranthene
24 Nitrobenzene	64 2,3,4,6-Tetrachlorophenol	104 Benzo[a]pyrene
25 Isophorone	65 Diethylphthalate	105 Perylene-d12
26 2-Nitrophenol	66 Fluorene	106 3-Methylcholanthrene
27 2,4-Dimethylphenol	67 4-Chlorophenylphenylether	107 Ideno(1,2,3-cd)pyrene
28 Benzoic acid	68 4-Nitroaniline	108 Dibenz[a,h]anthracene
29 bis(2-Chloroethoxy)methane	69 2-Methyl-4,6-dinitrophenol	109 Benzo[g,h,i]perylene
30 2,4-Dichlorophenol	70 Diphenylamine	
31 1,2,4-Trichlorobenzene	71 Azobenzene	
32 Naphthalene-d8	72 Tribromophenol	
33 Naphthalene	73 1,3,5-Trinitrobenzene	
34 4-Chloroaniline	74 Phenacetin	
35 2,6-Dichlorophenol	75 4-Bromophenyl phenyl ether	
36 Hexachloropropene	76 Hexachlorobenzene	
37 Hexachlorobutadiene	77 Pentachlorophenol	
38 4-Chloro-3-methylphenol	78 Pentachloronitrobenzene	
39 Safrole	79 Phenanthrene-d10	
40 2-Methylnaphthalene	80 Phenanthrene	

