

GC Application

ID No.: 16419

8270 PAHs ZB-MR2

Column: Zebtron[™] ZB-MultiResidue[™]-2, GC Cap. Column 30 m x 0.25 mm x 0.20 μm, Ea

Phase: Proprietary Pesticides Phase

Dimensions: 30 meters x 0.25 mm x 0.2 μm

Order No: 7HG-G017-10

Oven Profile: 100 °C to 260 °C @ 15 °C/min to 280 °C @ 8 °C/min for 3 min to 320 °C @ 15 °C/min for 5 min to 340 °C at 5 °C/min.

Carrier Gas: Constant Flow Helium, 1.5 mL/min

Injection: Split 5:1 1 μL @ 240°C

Detection: Mass Selective (MSD) (230°C)

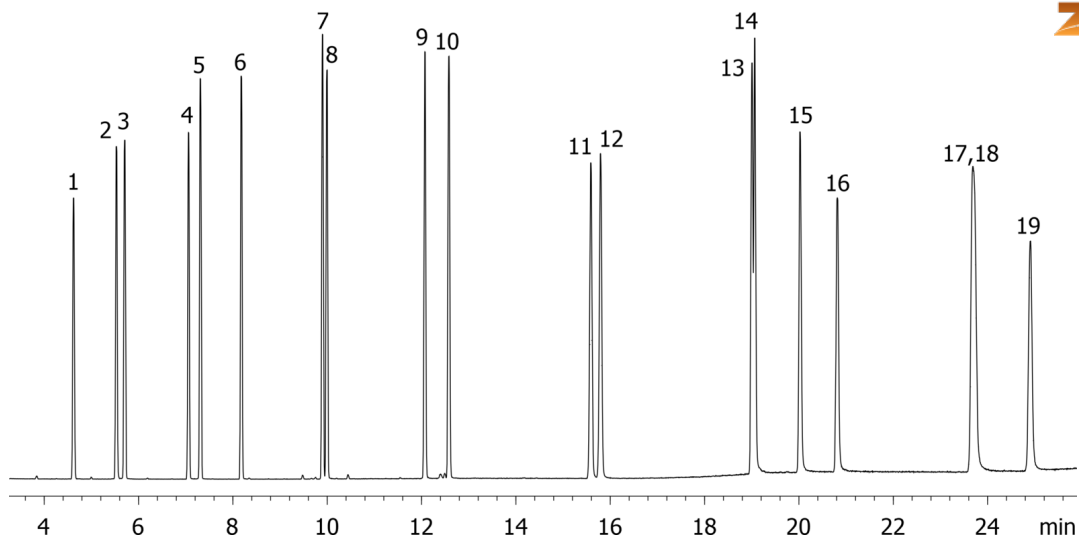
Analyst Note: Analytes are 50ppm in Dichloromethane



Products used in this application:



16419



8270 PAHs ZB-MR2

ANALYTES:

- 1 Naphthalene
- 2 2-Methylnaphthalene
- 3 1-Methylnaphthalene
- 4 Acenaphthylene
- 5 Acenaphthene
- 6 Fluorene
- 7 Phenanthrene
- 8 Anthracene
- 9 Fluoranthene
- 10 Pyrene
- 11 Benz[a]anthracene
- 12 Chrysene
- 13 Benzo[b]fluoranthene
- 14 Benzo[k]fluoranthene
- 15 Benzo[a]pyrene
- 16 3-Methylchloanthrene
- 17 Ideno(1,2,3-cd)pyrene
- 18 Dibenz[a,h]anthracene
- 19 Benzo[g,h,i]perylene

