

HPLC Application

ID No.: 16444

Bamethan on Gemini C18

Column: Gemini® 5 µm C18 110 Å, LC Column 100 x 2 mm, Ea

Dimensions: 100 x 2 mm ID

Order No: 00D-4435-B0

Elution Type: Isocratic

Eluent A: 0.1% Formic Acid

Eluent B: Acetonitrile

Gradient Profile:	Step No.	Time (min)	Pct A	Pct B
	1	0	97	3

Flow Rate: 0.4 mL/min

Col. Temp.: ambient

Detection: Mass Spectrometer (MS) @ amu (ambient)

Detector Info: 20 ng/mL in plasma, 1:5 plasma/Acetonitrile protein precipitation, 6.9 pg on column

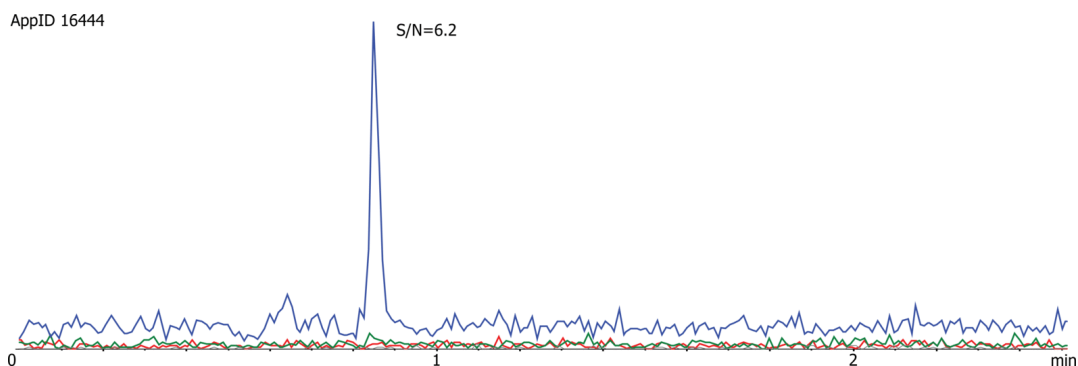
Analyst Note: SecurityGuard™ Guard Cartridge System extends column lifetime.

- SecurityGuard Cartridges, Gemini C18 4 x 2.0mm, 10/Pk Part No.: AJ0-7596

- Holder Part No.: KJ0-4282



Products used in this application:



ANALYTES:

1 Bemethan

