

# GC Application

ID No.: 16463

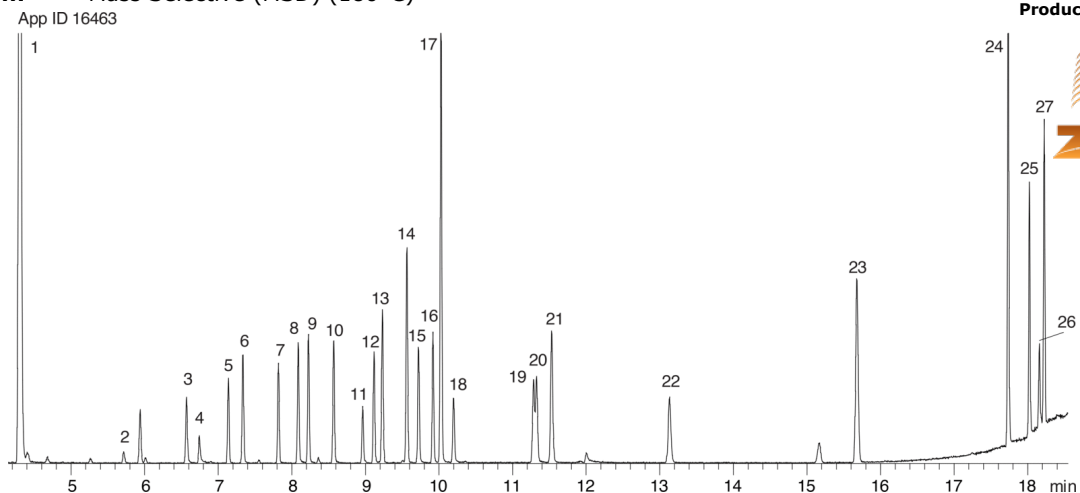
## Drug Screen on ZB-XLB

**Column:** Zebron<sup>™</sup> ZB-XLB, GC Cap. Column 30 m x 0.25 mm x 0.50  $\mu$ m, Ea  
**Phase:** Proprietary XLB Phase  
**Dimensions:** 30 meters x 0.25 mm x 0.5  $\mu$ m  
**Order No:** 7HG-G019-17  
**Oven Profile:** 140 °C to 240°C @ 10°C/min for 5 min to 340 °C @ 25 °C/min for 5 min.

**Carrier Gas:** Constant Flow Helium, 1.5 mL/min  
**Injection:** Split 5:1 1  $\mu$ L @ 250°C  
**Detection:** Mass Selective (MSD) (180°C)



Products used in this application:



## Drug Screen on ZB-XLB

### ANALYTES:

- 1 Nicotine
- 2 Methylecgonine
- 3 Acetaminophen
- 4 Ibuprofen
- 5 Allobarbitol
- 6 Aprobarbitol
- 7 Butabarbital
- 8 Phenacetin
- 9 Amobarbital
- 10 Pentobarbital
- 11 Meprobamate
- 12 Secobarbital
- 13 Methyl benzilate
- 14 Benzphetamine
- 15 Dimenhydrinate
- 16 Hexobarbital
- 17 Caffeine
- 18 Doxylamine
- 19 Phenobarbital
- 20 Methapyrilene
- 21 Chlorpheniramine
- 22 Brompheniramine
- 23 Cocaine
- 24 Chlorcyclizine
- 25 Codeine
- 26 Diazepam
- 27 Morphine
- 28 Hydrocodone

