

# GC Application

ID No.: 16479

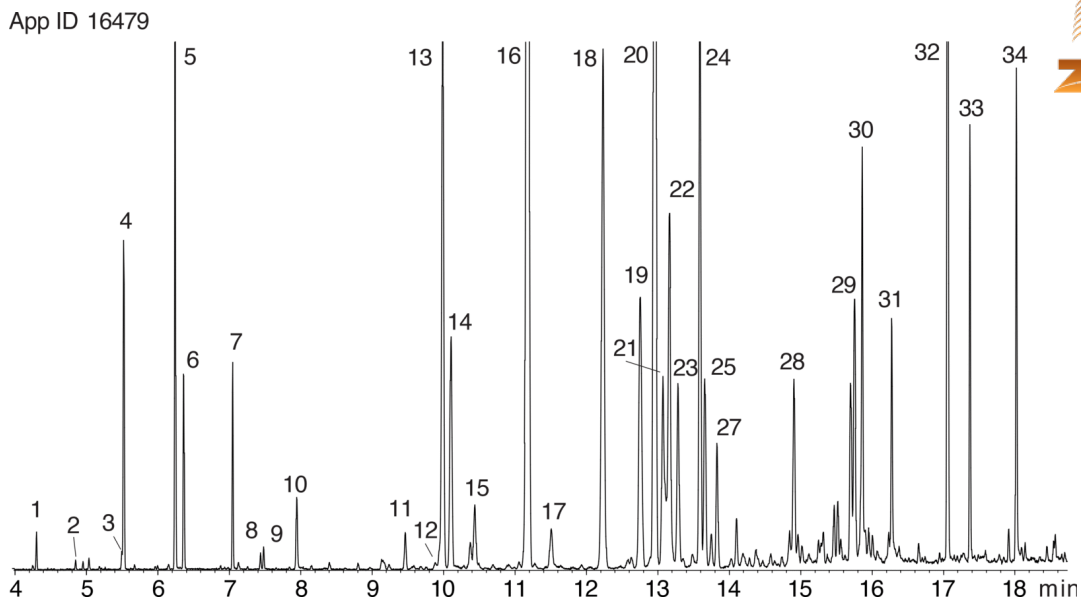
## Ylang Ylang Oil on ZB-XLB

**Column:** Zebron<sup>™</sup> ZB-XLB, GC Cap. Column 30 m x 0.25 mm x 0.25 μm, Ea  
**Phase:** Proprietary XLB Phase  
**Dimensions:** 30 meters x 0.25 mm x 0.25 μm  
**Order No:** 7HG-G019-11  
**Oven Profile:** 50 °C for 1 min to 140 °C @ 15 °C/min for 5 min to 280 °C @ 15 °C/min.

**Carrier Gas:** Constant Flow Helium, 1.5 mL/min  
**Injection:** Split 50:1 1 μL @ 250°C  
**Detection:** Mass Selective (MSD) (180°C)  
**Analyst Note:** 1% ylang ylang oil in ethyl acetate



Products used in this application:



## Ylang Ylang Oil on ZB-XLB

### ANALYTES:

- 1 a-Pinene
- 2 beta-Pinene
- 3 Eucalyptol
- 4 1-Methoxy-4-methyl benzene
- 5 Linalool
- 6 Benzoic acid methyl ester
- 7 Benzyl acetate
- 8 a-Terpineol
- 9 Methyl salicylate
- 10 Nerol
- 11 alpha-Cubebene
- 12 Ylangene
- 13 Geraniol
- 14 Copaene
- 15 b-Elemene
- 16 b-Caryophyllene
- 17 b-Cubebene
- 18 alpha-Caryophyllene
- 19 g-Murolene
- 20 Germacrene-D
- 21 alpha-Farnesene
- 22 alpha-Bergamotene
- 23 a-Murolene
- 24 Amorphene
- 25 Cadinene
- 26 Calamenene
- 27 Calamenene
- 28 Caryophyllene oxide
- 29 Cadinol
- 30 Cadinol
- 31 Farnesol
- 32 Benzyl benzoate
- 33 Farnesyl acetate
- 34 Benzyl salicylate

