

## Sulfur Components in Fuel on ZB-1MS

**Column:** Zebtron™ ZB-1MS, GC Cap. Column 30 m x 0.32 mm x 1.00 µm, Ea

**Phase:** 100% Dimethylpolysiloxane

**Dimensions:** 30 meters x 0.32 mm x 1 µm

**Order No:** 7HM-G011-22

**Oven Profile:** 40 °C for 1 min to 300 °C @ 10 °C/min for 3 min

**Carrier Gas:** Constant Flow Helium, 2 mL/min

**Injection:** Split 10:1 1 µL @ 270°C

**Detection:** Sulfur (SCD) (320°C)

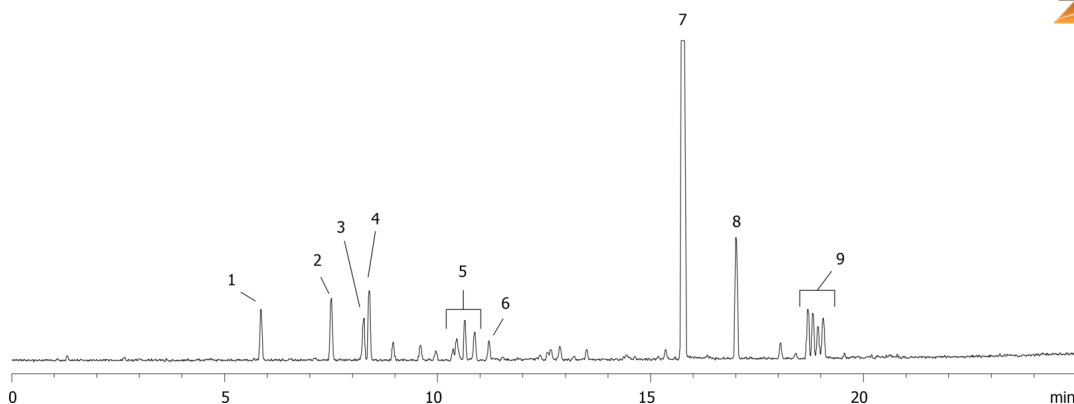
**Analyst Note:** California Phase II Reference Fuel - 30 mg/kg total sulfur



Products used in this application:



16503



### ANALYTES:

- 1 Thiophene
- 2 Dimethyldisulfide
- 3 2-Methyl-thiophene
- 4 3-Methyl-thiophene
- 5 C2-Thiophenes
- 6 Diethylsulfide
- 7 Dibutyl sulfide
- 8 Benzothiophene
- 9 C1-Benzothiophenes

