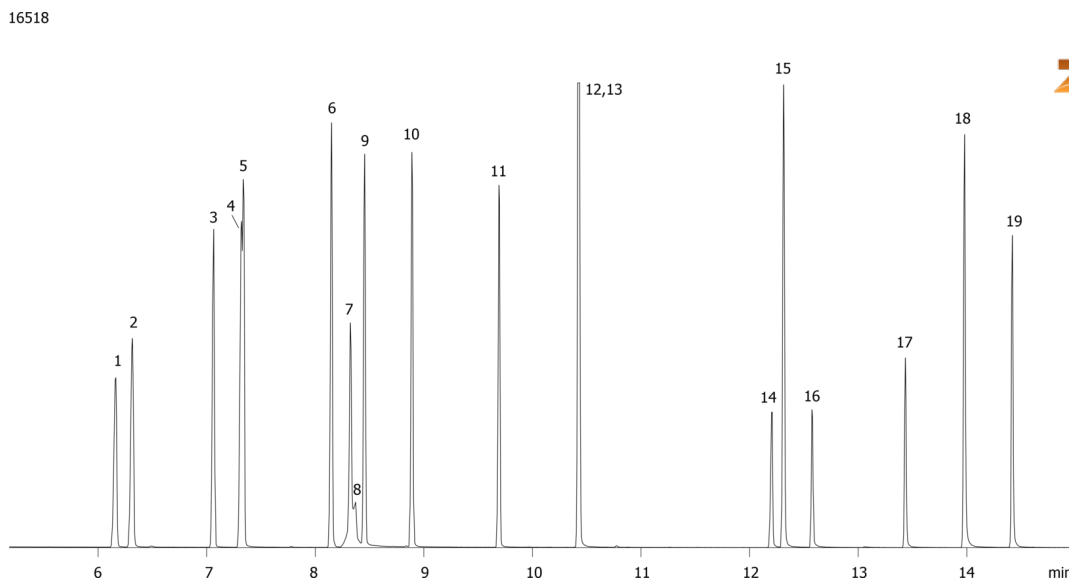


**Phenols on ZB-MR2****Column:** Zebron<sup>™</sup> ZB-MultiResidue<sup>™</sup>-2, GC Cap. Column 30 m x 0.25 mm x 0.20  $\mu$ m, Ea**Phase:** Proprietary Pesticides Phase**Dimensions:** 30 meters x 0.25 mm x 0.2  $\mu$ m**Order No:** 7HG-G017-10**Oven Profile:** 40 °C for 2 min to 260 °C @ 15 °C/min to 280 °C @ 8 °C/min for 3 min to 320 °C @ 15 °C/min for 5 min.**Carrier Gas:** Constant Flow Helium, 1.5 mL/min**Injection:** Splitless :1 1  $\mu$ L @ 240°C**Detection:** Mass Selective (MSD) (320°C)**Analyst Note:** Analytes are 50ppm in Dichloromethane**Products used in this application:**

## Phenols on ZB-MR2

### ANALYTES:

- 1 Phenol
- 2 2-Chlorophenol
- 3 2-Methylphenol
- 4 4-Methylphenol
- 5 3-Methylphenol
- 6 2,4-Dimethylphenol
- 7 2-Nitrophenol
- 8 Benzoic acid
- 9 2,4-Dichlorophenol
- 10 2,6-Dichlorophenol
- 11 4-Chloro-3-methylphenol
- 12 2,4,6-Trichlorophenol
- 13 2,4,5-Trichlorophenol
- 14 4-Nitrophenol
- 15 2,3,4,6-Tetrachlorophenol
- 16 2,4-Dinitrophenol
- 17 2-Methyl-4,6-dinitrophenol
- 18 Pentachlorophenol
- 19 Dinoseb

