

GC Application

ID No.: 16524

Chlorinated compounds on ZB-MR1

Column: Zebron[™] ZB-MultiResidue[™]-1, GC Cap. Column 30 m x 0.25 mm x 0.25 μm, Ea

Phase: Proprietary Pesticides Phase

Dimensions: 30 meters x 0.25 mm x 0.25 μm

Order No: 7HG-G016-11

Oven Profile: 40°C for 2 min to 320°C @ 20°C/min for 5 min

Carrier Gas: Constant Flow Helium, 1 mL/min

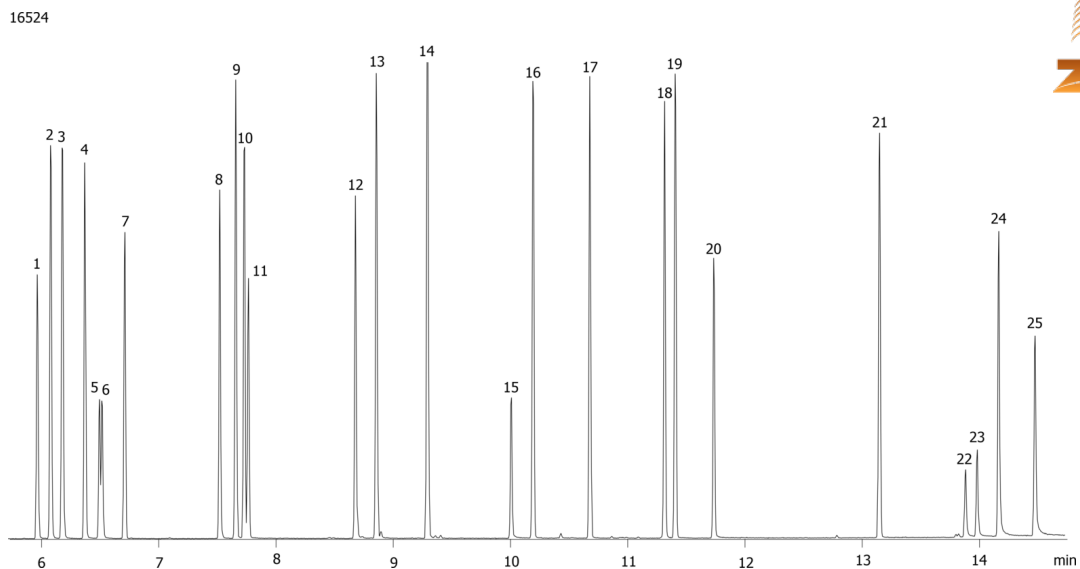
Injection: Split 5:1 1 μL @ 240°C

Detection: Mass Selective (MSD) (230°C)

Analyst Note: Analytes are 25ppm in methylene chloride.



Products used in this application:



Chlorinated compounds on ZB-MR1

ANALYTES:

- 1 bis(2-Chloroethyl)ether
- 2 1,2-Dichlorobenzene
- 3 1,4-Dichlorobenzene
- 4 1,3-Dichlorobenzene
- 5 bis(2-Chloroisopropyl)ether
- 6 bis(2-Chloroisopropyl)ether
- 7 Hexachloroethane
- 8 bis(2-Chloroethoxy)methane
- 9 1,2,4-Trichlorobenzene
- 10 Hexachlorobutadiene
- 11 Hexachloropropene
- 12 Hexachlorocyclopentadiene
- 13 1,2,4,5-Tetrachlorobenzene
- 14 2-Chloronaphthalene
- 15 1,3-Dinitrobenzene
- 16 Pentachlorobenzene
- 17 4-Chlorophenylphenylether
- 18 4-Bromophenyl phenyl ether
- 19 Hexachlorobenzene
- 20 Pentachloronitrobenzene
- 21 Isodrin
- 22 Aramite
- 23 Aramite
- 24 Chlorobenzilate
- 25 Kepone

