

## Rose Oil by MSD (Straight liner) on ZB-XLB

**Column:** Zebtron<sup>™</sup> ZB-XLB, GC Cap. Column 30 m x 0.25 mm x 0.25 µm, Ea

**Phase:** Proprietary XLB Phase

**Dimensions:** 30 meters x 0.25 mm x 0.25 µm

**Order No:** 7HG-G019-11

**Oven Profile:** 50°C to 340°C @ 10°C/min for 10 min

**Carrier Gas:** Constant Flow Helium, 1.2 mL/min

**Injection:** Split 25:1 1 µL @ 250°C

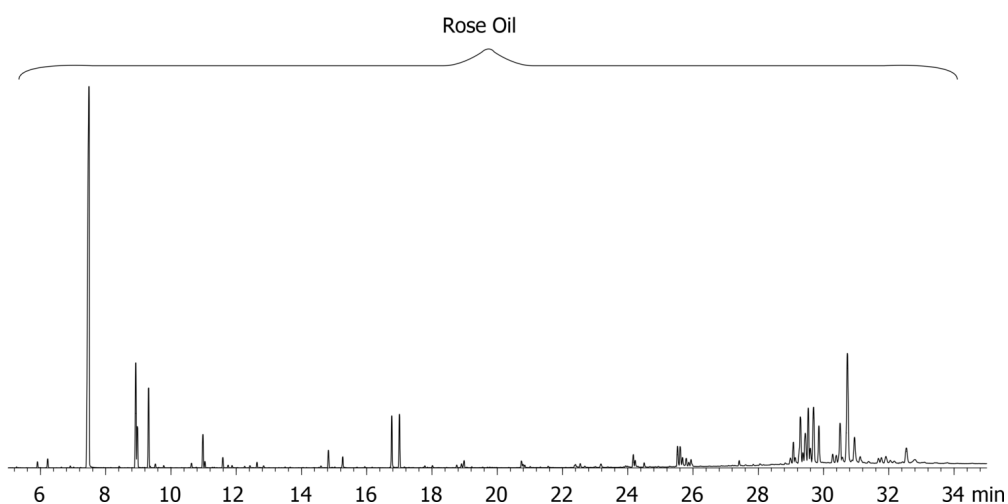
**Detection:** Mass Selective (MSD) (230°C)

**Analyst Note:** Sample is 1% Rose oil in ethyl acetate

16655



Products used in this application:



### ANALYTES:

- 1 Rose oil

