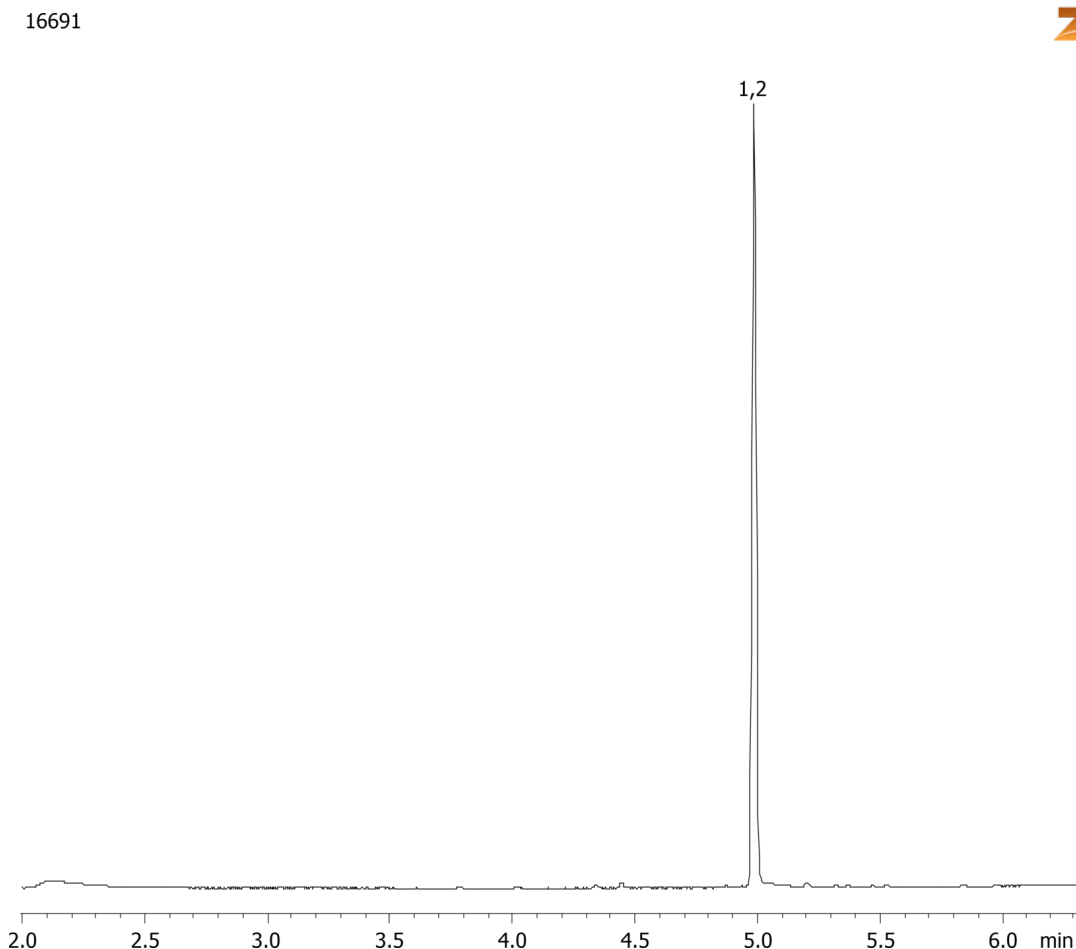


Carboxy-THC by MSD on a ZB-1MS**Column:** Zebron[™] ZB-1MS, GC Cap. Column 10 m x 0.18 mm x 0.18 µm, Ea**Phase:** 100% Dimethylpolysiloxane**Dimensions:** 10 meters x 0.18 mm x 0.18 µm**Order No:** 7CD-G011-08**Oven Profile:** 170 °C to 300 °C @ 20 °C/min for 5 min**Carrier Gas:** Constant Flow Helium, 55 cm/sec**Injection:** Split 10:1 1 µL @ 250°C**Detection:** Mass Selective (MSD) (300°C)**Analyst Note:** Analytes are 1.5ppm derivatized with BSTFA
Sim ions:
(Quant ion*) D3-Carboxy-thc (*374,476,477): Carboxy-thc (*371,473,474)**Products used in this application:****ANALYTES:**

- 1 Carboxy-THC-d3
- 2 Carboxy-THC

