

# HPLC Application

ID No.: 16707

## Tropicamide on Lux Cellulose-1

**Column:** Lux<sup>®</sup> 5  $\mu$ m Cellulose-1, LC Column 250 x 4.6 mm, Ea

**Dimensions:** 250 x 4.6 mm ID

**Order No:** 00G-4459-E0

**Elution Type:** Isocratic

**Eluent A:** 0.1% DEA in Hexane

**Eluent B:** 0.1% DEA in Isopropanol

| Gradient Profile: | Step No. | Time (min) | Pct A | Pct B |
|-------------------|----------|------------|-------|-------|
|                   | 1        | 0          | 80    | 20    |

**Flow Rate:** 1 mL/min

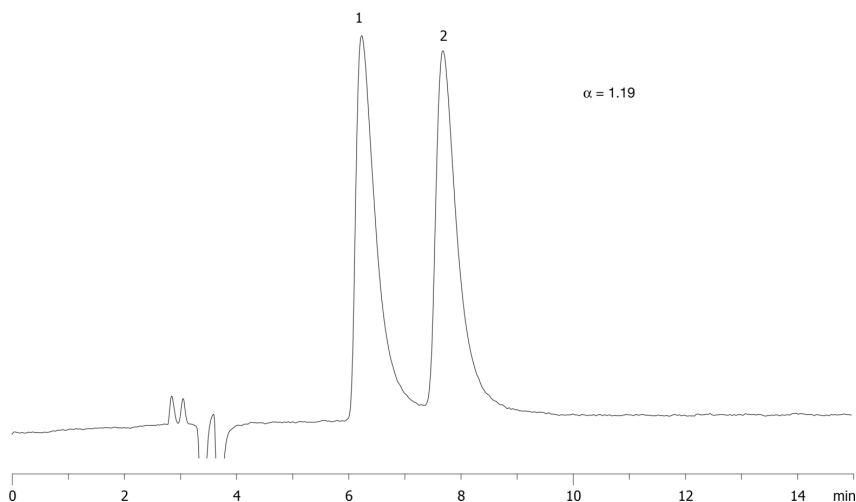
**Col. Temp.:** 25 °C

**Detection:** UV-Vis Abs.-Diode Array (PDA) @ 220 nm (ambient)

**Analyst Note:** Sample concentration injected on column was 500 $\mu$ g/mL diluted in mobile phase. Isomer assignments are not known.  
16707



Products used in this application:



### ANALYTES:

- 1 Tropicamide
- 2 Tropicamide