

Gradient Separation of a Cold Mix on Gemini C18

Column: Gemini® 5 µm C18 110 Å, LC Column 150 x 4.6 mm, Ea

Dimensions: 150 x 4.6 mm ID

Order No: 00F-4435-E0

Elution Type: Gradient

Eluent A: 10 mM Phosphate Buffer, pH 2.5

Eluent B: Acetonitrile

Gradient Profile:	Step No.	Time (min)	Pct A	Pct B
	1	0	95	5
	2	15	40	60
	3	17	40	60
	4	17.01	95	5
	5	20	95	5

Flow Rate: 1 mL/min

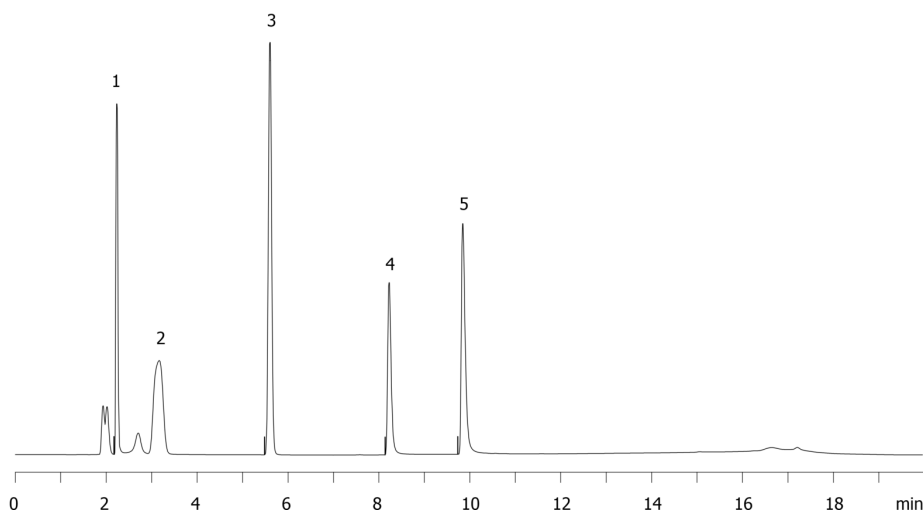
Col. Temp.: ambient

Detection: UV-Vis Abs.-Diode Array (PDA) @ 215 nm (ambient)

Analyst Note: Gradient separation of four analytes in cold remedy on Gemini C18: Phenylephrine, Acetaminophen, Chlorpheniramine and Dextromethorphan and impurity of Maleic acid.
16770



Products used in this application:



ANALYTES:

- 1** Phenylephrine
Retention Time: 2.232 min
- 2** Maleic acid
Retention Time: 3.163 min
- 3** Acetaminophen
Retention Time: 5.6 min
- 4** Chlorpheniramine
Retention Time: 8.223 min
- 5** Dextromethorphan
Retention Time: 9.844 min

