

HPLC Application

ID No.: 16893

Luna - USP Estradiol#2

Column: Luna® 5 µm C18(2) 100 Å, LC Column 150 x 4.6 mm, Ea

Dimensions: 150 x 4.6 mm ID

Order No: 00F-4252-E0

Elution Type: Isocratic

Eluent A: Acetonitrile

Eluent B: Water

Gradient Profile:	Step No.	Time (min)	Pct A	Pct B
	1	0	55	45

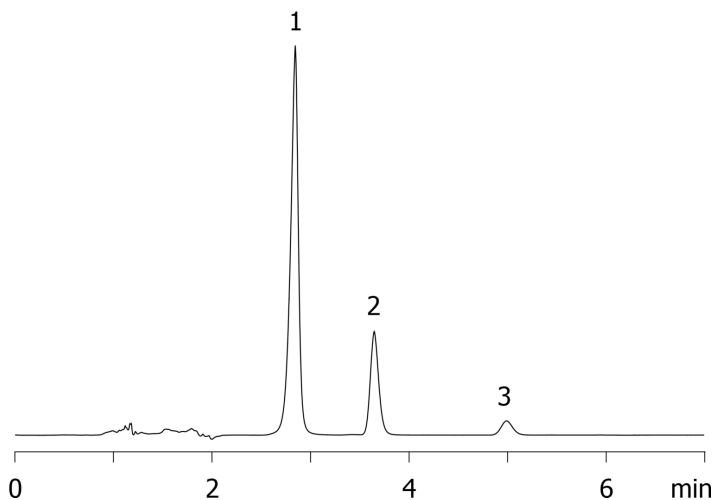
Flow Rate: 1 mL/min

Col. Temp.: 30 °C

Detection: UV-Vis Abs.-Variable Wave.(UV) @ 205 nm (ambient)
16893



Products used in this application:



ANALYTES:

- 1 Ethylparaben
- 2 Estrone
- 3 Estradiol

