

HPLC Application

ID No.: 17323

Tolperisone on Lux Cellulose-2

Column: Lux[®] 5 μ m Cellulose-2, LC Column 250 x 4.6 mm, Ea

Dimensions: 250 x 4.6 mm ID

Order No: 00G-4457-E0

Elution Type: Isocratic

Eluent A: 0.1% DEA in Hexane

Eluent B: 0.1% DEA in Isopropanol

Gradient Profile:	Step No.	Time (min)	Pct A	Pct B
	1	10	90	10

Flow Rate: 1 mL/min

Col. Temp.: ambient

Detection: UV-Vis Abs.-Variable Wave.(UV) @ 220 nm (ambient)

Analyst Note: SecurityGuard[™] Guard Cartridge System extends column lifetime.

- SecurityGuard Cartridges, Lux Cellulose-2, 4 x 3.0mm, 10/Pk Part No.: AJ0-8366

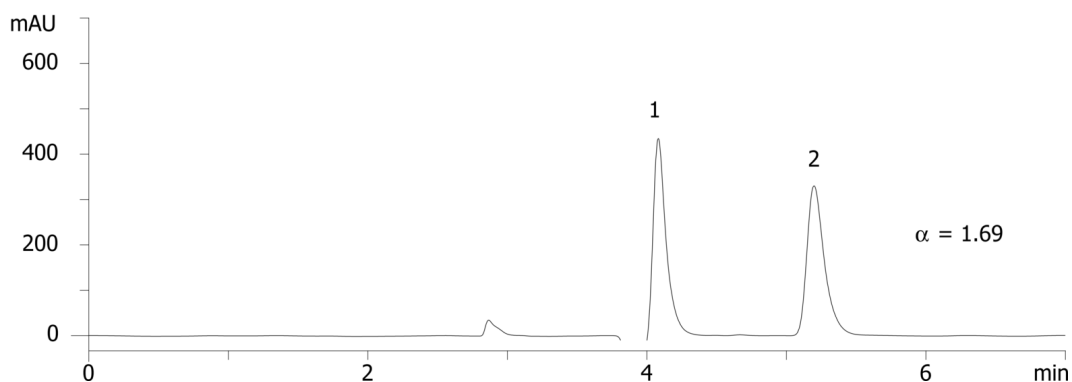
- Holder Part No.: KJ0-4282



Products used in this application:



17323



ANALYTES:

- 1** Tolperisone
Retention Time: 4.1 min
- 2** Tolperisone
Retention Time: 5.2 min