

HPLC Application

ID No.: 17521

PEGylated proteins on Jupiter[®] 300 C18 3 μ m and 5 μ m, and C4 5 μ m columns

Column: Jupiter[®] 3 μ m C18 300 Å, LC Column 150 x 4.6 mm, Ea

Dimensions: 150 x 4.6 mm ID

Order No: 00F-4263-E0

Elution Type: Gradient

Eluent A: 0.1% TFA, 2% ACN in Water

Eluent B: 90% ACN, 0.085% TFA in Water

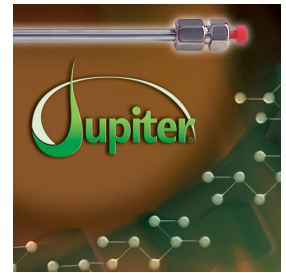
Gradient Profile:	Step No.	Time (min)	Pct A	Pct B
	1	0	80	20
	2	25	35	65

Flow Rate: 1 mL/min

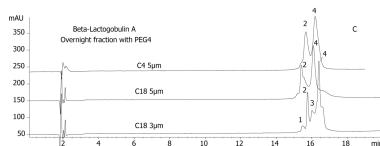
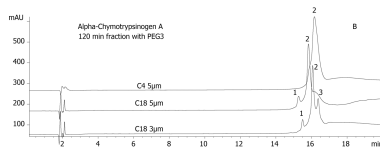
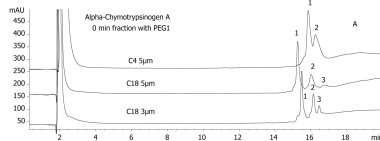
Col. Temp.: 45 °C

Detection: UV-Vis Abs.-Variable Wave.(UV) @ 214 nm (25 °C)

Analyst Note: Compare reverse phase separations of different PEGylated and intact proteins selected at different reaction time-points in the following HPLC-MS.



Products used in this application:



ANALYTES:

- 1 PEGylated Proteins

