

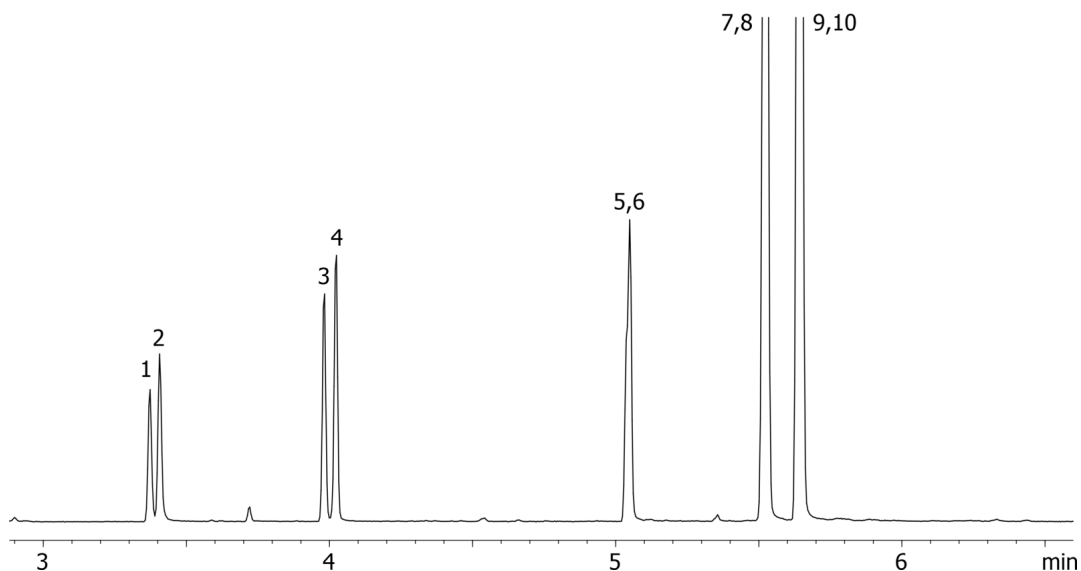
Expanded amphetamines by MSD on a ZB-XLB

Column: N/A
Phase: N/A
Dimensions: N/A
Order No: N/A
Oven Profile: N/A

Carrier Gas: N/A
Injection: N/A
Detection: N/A

Analyst Note: Analytes are 40ppm derivatized with HFBA
Sim ions:
(Quant ion*) D11-Amphetamine (*244,128): Amphetamine (*240,118,117): D14-Methamphetamine (*261,213):
Methamphetamine (*254,210,118): D5-MDA (*167,380,244): MDA (*162,375,240): D5-MDMA (*258,213,164):

17522



Expanded amphetamines by MSD on a ZB-XLB

ANALYTES:

- 1 Amphetamine-d11
- 2 Amphetamine
- 3 Methamphetamine-d14
- 4 Methamphetamine
- 5 MDA-d5
- 6 MDA
- 7 MDMA-d5
- 8 MDMA
- 9 MDEA-d5
- 10 MDEA

