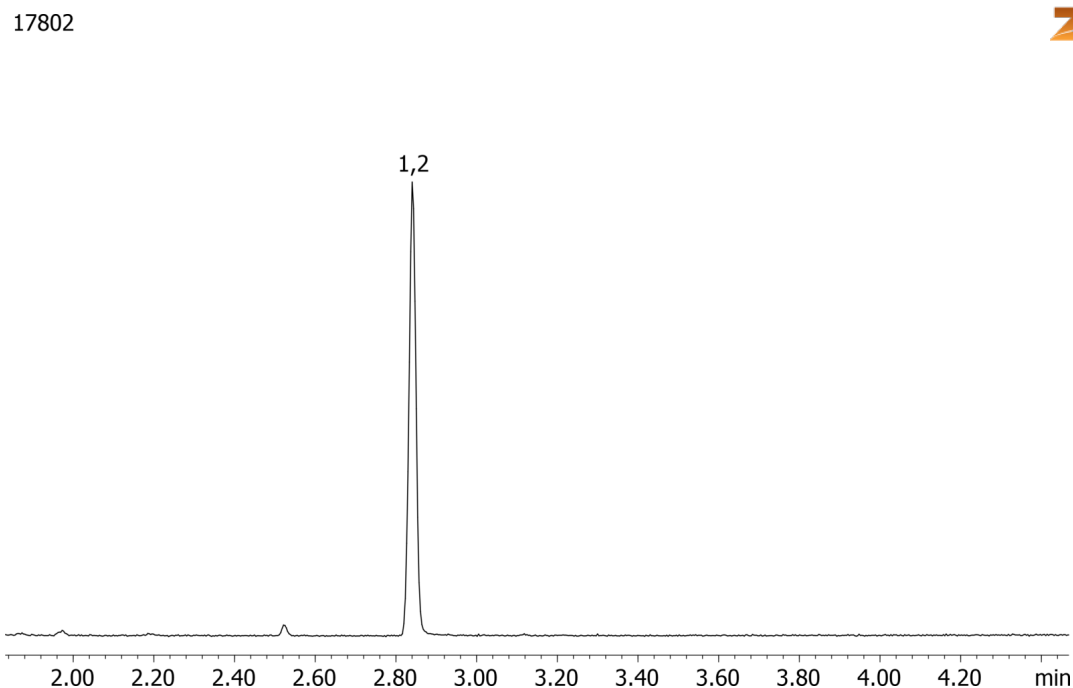


**6-MAM by MSD on a ZB-Drug1****Column:** Zebtron™ ZB-Drug-1, GC Cap. Column 10 m x 0.18 mm x 0.18 µm, Ea**Phase:****Dimensions:** 10 meters x 0.18 mm x 0.18 µm**Order No:** 7CD-G023-08**Oven Profile:** 245°C to 300°C @ 25 °C/min**Carrier Gas:** Constant Flow Helium, 0.7 mL/min**Injection:** Split 10:1 1 µL @ 260°C**Detection:** Mass Selective (MSD) (300°C)**Analyst Note:** Analytes are 1ppm derivatized with BSTFA  
Sim ions:  
(Quant ion\*) D3-6-MAM (\*402,403): 6-MAM (\*399,400,340)**Products used in this application:****ANALYTES:**

- 1 6-MAM-d3
- 2 6-MAM

