

## Bronopol in Glue by HPLC-DAD

**Column:** Luna® 5 µm PFP(2) 100 Å, LC Column 150 x 3 mm, Ea

**Dimensions:** 150 x 3 mm ID

**Order No:** 00F-4448-Y0

**Elution Type:** Isocratic

**Eluent A:** Methanol

**Eluent B:** Water with Phosphoric Acid (0.1% v/v)

Gradient Profile:	Step No.	Time (min)	Pct A	Pct B
1	0	5	95	

**Flow Rate:** 0.5 mL/min

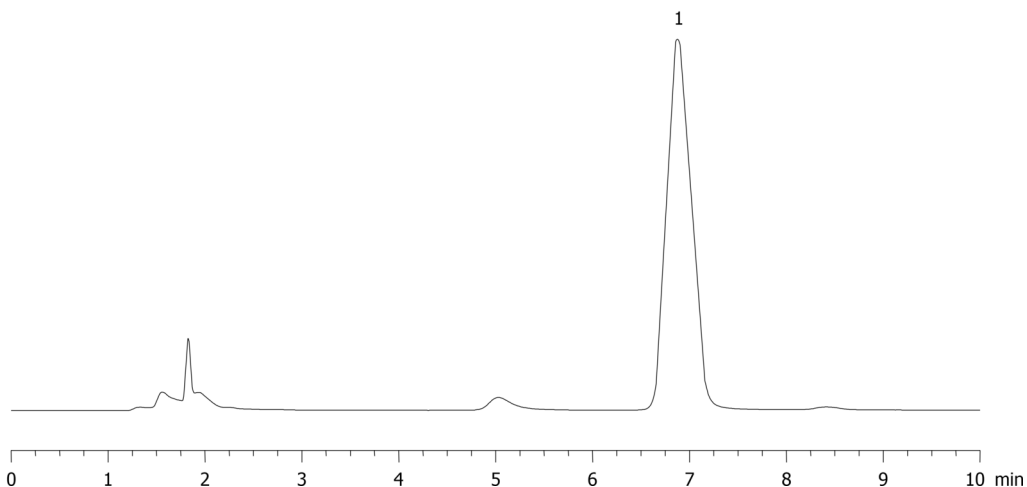
**Col. Temp.:** 35 °C

**Detection:** UV-Vis Abs.-Diode Array (PDA) @ 210 nm (35 °C)

**Analyst Note:** The application was provided by the Fraunhofer IVV in Freising, Germany.  
17903



Products used in this application:



### ANALYTES:

**1** Bronopol

Retention Time: 6.87 min

