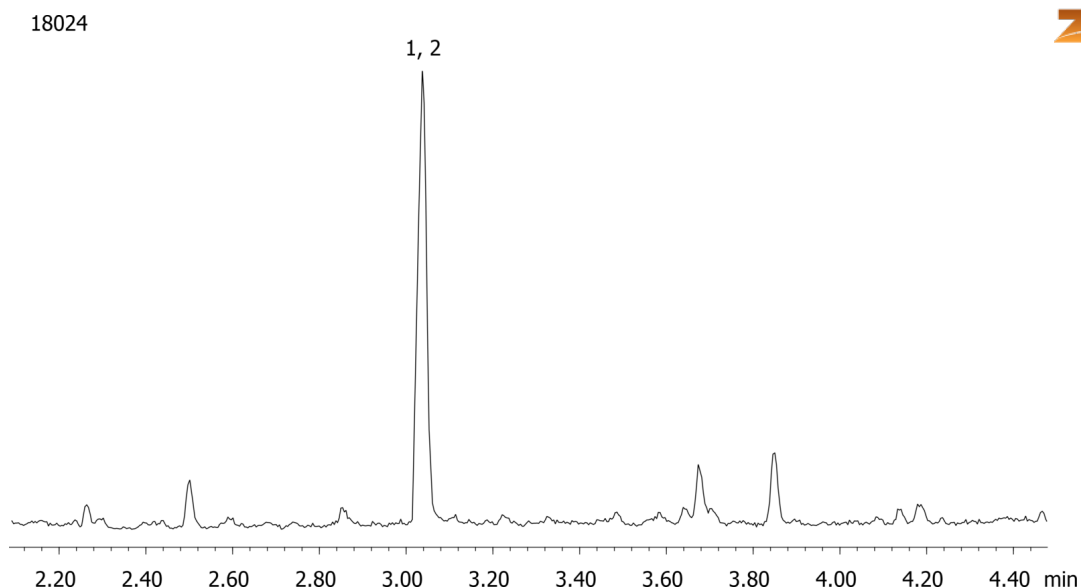


**Carboxy-THC from urine by Screen C on a ZB-Drug1****Column:** Zebtron™ ZB-Drug-1, GC Cap. Column 10 m x 0.18 mm x 0.18 µm, Ea**Phase:** Proprietary Drug Phase**Dimensions:** 10 meters x 0.18 mm x 0.18 µm**Order No:** 7CD-G023-08**Oven Profile:** 220°C to 320°C @ 20 °C/min for 5 min**Carrier Gas:** Constant Flow Helium, 55 cm/sec**Injection:** Split 10:1 1 µL @ 280°C**Detection:** Mass Selective (MSD) (320°C)**Analyst Note:** Analytes are 15ng/mL in urine derivatized with BSTFA  
Sim ions:  
(Quant ion\*) D3-Carboxy-thc (\*374,476,477): Carboxy-thc (\*371,473,474)**Products used in this application:****ANALYTES:**

- 1 Carboxy-THC-d3
- 2 Carboxy-THC

