

## European Polynuclear Aromatic Hydrocarbons (PAH's) on ZB-XLB-HT

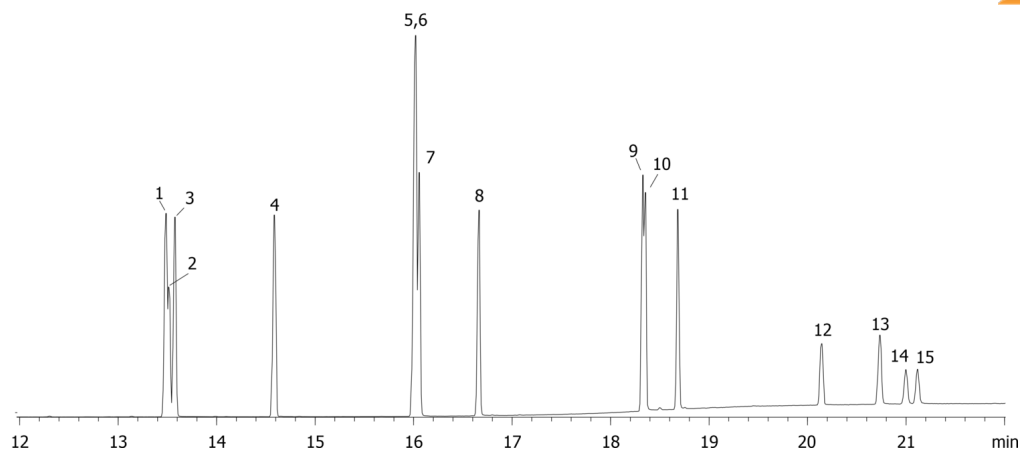
**Column:** Zebron<sup>™</sup> ZB-XLB-HT, GC Cap. Column 30 m x 0.25 mm x 0.25  $\mu$ m, Ea  
**Phase:** Proprietary XLB Phase  
**Dimensions:** 30 meters x 0.25 mm x 0.25  $\mu$ m  
**Order No:** 7HG-G024-11  
**Oven Profile:** 80 °C for 0.66 min to 250 °C @ 20 °C/min to 300 °C @ 8 °C/min to 360 °C @ 20 °C/min for 6 min  
**Carrier Gas:** Constant Flow Helium, 1.2 mL/min  
**Injection:** Splitless :1 1  $\mu$ L @ 280°C  
**Detection:** Mass Selective (MSD) (360°C)  
**Analyst Note:** Pulsed Splitless injection @ 20psi for 0.66 min.  
All analytes @ 10ppm in dichloromethane



Products used in this application:



18050



## European Polynuclear Aromatic Hydrocarbons (PAH's) on ZB-XLB-HT

### ANALYTES:

- 1 Benz[a]anthracene
- 2 Cyclopenta(c,d)pyrene
- 3 Chrysene
- 4 5-Methylchrysene
- 5 Benzo[b]fluoranthene
- 6 Benzo[j]fluoranthene
- 7 Benzo[k]fluoranthene
- 8 Benzo[a]pyrene
- 9 Indeno[1,2,3-cd]pyrene
- 10 Dibenz[a,h]anthracene
- 11 Benzo[g,h,i]perylene
- 12 Dibenzo[a,l]pyrene
- 13 Dibenzo[a,e]pyrene
- 14 Dibenzo[a,i]pyrene
- 15 Dibenzo[a,h]pyrene

