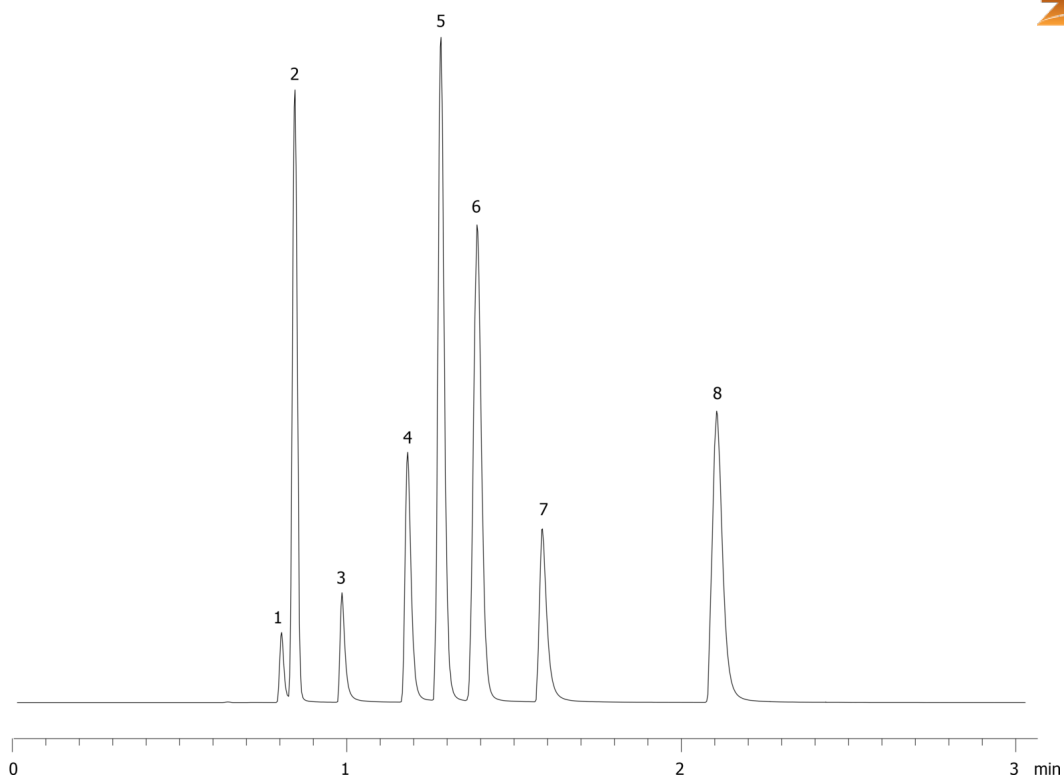


Blood Alcohols on ZB-BAC-1**Column:** ZebronTM ZB-BAC-1, GC Cap. Column 30 m x 0.32 mm x 1.80 μ m, Ea**Phase:** Proprietary Blood Alcohol Phase**Dimensions:** 30 meters x 0.32 mm x 1.8 μ m**Order No:** 7HM-G021-31**Oven Profile:** 40 °C Isothermal**Carrier Gas:** Constant Flow Helium, 80 cm/sec**Injection:** Split 15:1 1 μ L @ 150°C**Detection:** Flame Ionization (FID) (250°C)**Analyst Note:** Analytes and internal standards were 0.100% in water

18059

**ANALYTES:**

- 1 Methanol
- 2 Acetaldehyde
- 3 Ethanol
- 4 Isopropanol
- 5 Acetone
- 6 t-Butanol
- 7 n-Propanol
- 8 2-Butanol

**Products used in this application:**