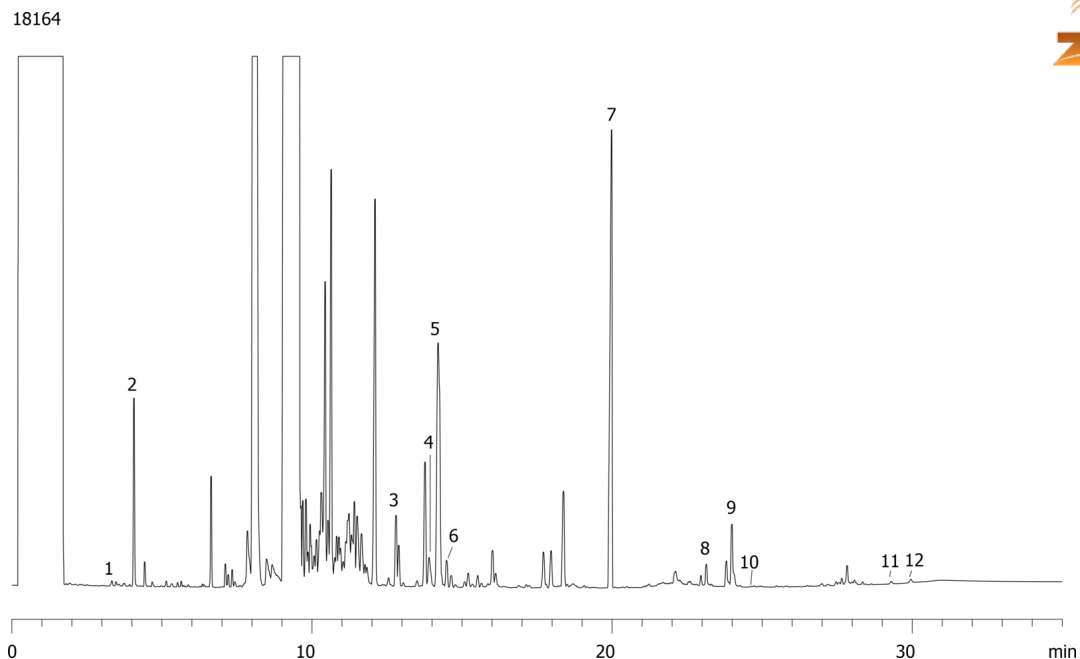


## Biodiesel Glyceride Analysis - SME on ZB-5HT

**Column:** Zebron<sup>™</sup> ZB-5HT, GC Cap. Column 15 m x 0.32 mm x 0.10 μm, Ea  
**Phase:** 5% Phenyl 95% Dimethylpolysiloxane  
**Dimensions:** 15 meters x 0.32 mm x 0.1 μm  
**Order No:** 7EM-G015-02  
**Oven Profile:** 50 °C to 180 °C @ 15 °C/min to 230 °C at 7 °C/min to 370 °C at 10 °C/min for 9 min  
**Carrier Gas:** Constant Flow Hydrogen, 11.3 mL/min  
**Injection:** Splitless :1 1 μL @ 56°C  
**Detection:** Flame Ionization (FID) (380°C)  
**Analyst Note:** Injection used PTV to 350 °C @ 1200 °C/min.  
Courtesy of ASG (www.asg-analytik.de), a specialized Biofuel Laboratory!



Products used in this application:



## Biodiesel Glyceride Analysis - SME on ZB-5HT

### ANALYTES:

- 1 Glycerine
- 2 Butanetriol
- 3 C16:0
- 4 C18:2
- 5 Monoolein
- 6 C18:0
- 7 Tricaprin
- 8 C34
- 9 C36
- 10 C38
- 11 C52
- 12 Triolein

