

# HPLC Application

ID No.: 18245

## Tricyclic Antidepressants on Kinetex 2.6 $\mu$ m C18 50 x 2.1mm ID on Agilent 1200 (0.6 mL/min)

**Column:** Kinetex<sup>®</sup> 2.6  $\mu$ m C18 100 Å, LC Column 50 x 2.1 mm, Ea

**Dimensions:** 50 x 2.1 mm ID

**Order No:** 00B-4462-AN

**Elution Type:** Isocratic

**Eluent A:** 20 mM Potassium Phosphate pH 7

**Eluent B:** 50:50 MeOH and ACN

<b>Gradient Profile:</b>	<b>Step No.</b>	<b>Time (min)</b>	<b>Pct A</b>	<b>Pct B</b>
	1	0	48	52

**Flow Rate:** 0.6 mL/min

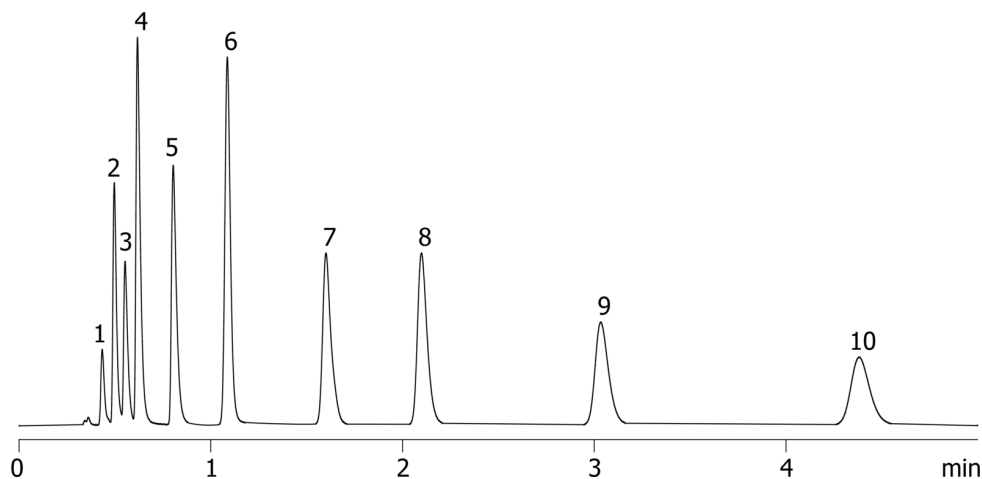
**Col. Temp.:** ambient

**Detection:** UV-Vis Abs.-Variable Wave.(UV) @ 254 nm (ambient)

18245



Products used in this application:



## Tricyclic Antidepressants on Kinetex 2.6 $\mu$ m C18 50 x 2.1mm ID on Agilent 1200 (0.6 mL/min)

### ANALYTES:

- 1 Tianeptine
- 2 Desmethyldoxepin
- 3 Protriptyline
- 4 Desipramine
- 5 Imipramine
- 6 Amoxapine
- 7 Doxepin
- 8 Nortriptyline
- 9 Amitriptyline
- 10 Clomipramine

