

## System Comparison - Agilent 1100 on Kinetex 2.6µm C18 50 x 4.6mm ID

**Column:** Kinetex® 2.6 µm C18 100 Å, LC Column 50 x 4.6 mm, Ea

**Dimensions:** 50 x 4.6 mm ID

**Order No:** 00B-4462-E0

**Elution Type:** Isocratic

**Eluent A:** Water

**Eluent B:** Acetonitrile

Gradient Profile:	Step No.	Time (min)	Pct A	Pct B
	1	0	35	65

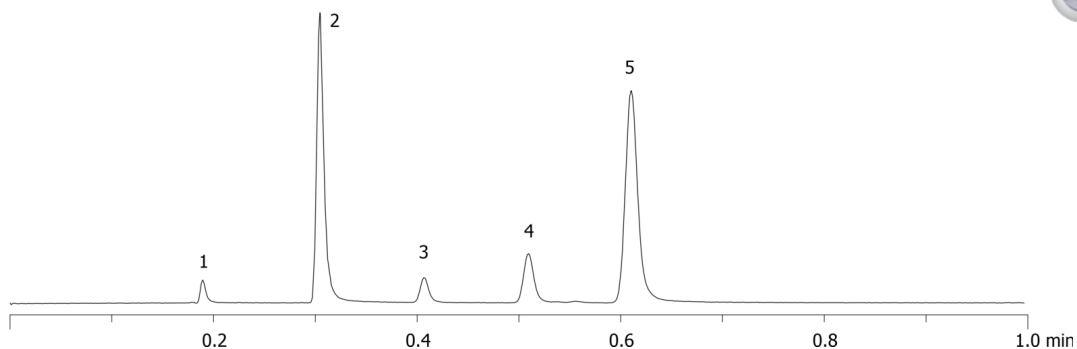
**Flow Rate:** 2.2 mL/min

**Col. Temp.:** ambient

**Detection:** UV-Vis Abs.-Variable Wave.(UV) @ nm (ambient)  
18256



Products used in this application:



### ANALYTES:

- 1** Uracil  
Retention Time: 0.19 min
- 2** Acetophenone  
Retention Time: 0.305 min
- 3** Benzene  
Retention Time: 0.407 min
- 4** Toluene  
Retention Time: 0.51 min
- 5** Naphthalene  
Retention Time: 0.61 min