

HPLC Application

ID No.: 18285

Preparative Scale Up of Trans-Stilbene Oxide on Lux 5 µm Cellulose-2 250 x 50

Column: Lux[®] 5 µm Cellulose-2, LC Column 250 x 50 mm, AXIA[™] Packed, Ea

Dimensions: 250 x 50 mm ID

Order No: 00G-4457-V0-AX

Elution Type: Isocratic

Eluent A: IPA

Eluent B: Hexane

Gradient	Step No.	Time (min)	Pct A	Pct B
Profile:	1	0	10	90

Flow Rate: 50 mL/min

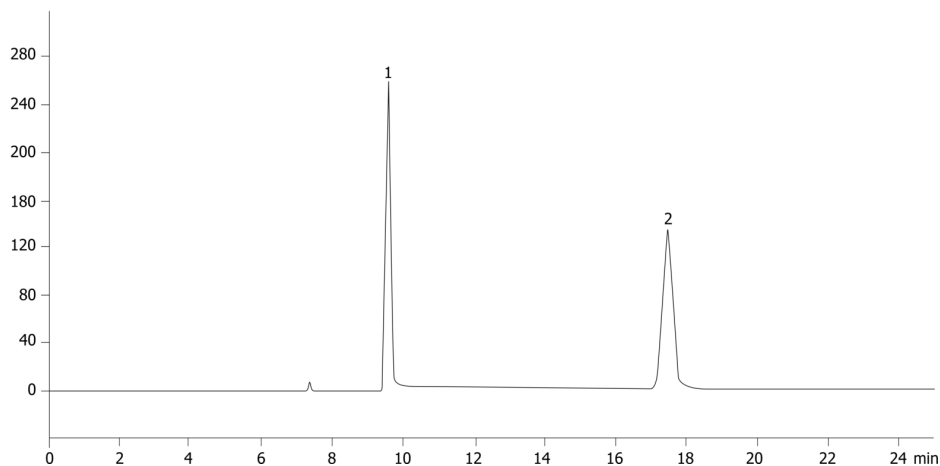
Col. Temp.: ambient

Detection: UV-Vis Abs.-Variable Wave.(UV) @ 220 nm (ambient)

18285



Products used in this application:



ANALYTES:

- 1 trans-Stilbene oxide
- 2 trans-Stilbene oxide