

Extraction of Sulfa Drugs from Porcine Plasma using Strata X-C

Column: Synergi™ 4 µm Max-RP 80 Å, LC Column 150 x 4.6 mm, Ea

Dimensions: 150 x 4.6 mm ID

Order No: 00F-4337-E0

Elution Type: Gradient

Eluent A: 20 mM KH₂PO₄ (pH 2.5)

Eluent B: ACN

| Gradient Profile: | Step No. | Time (min) | Pct A | Pct B |
|-------------------|----------|------------|-------|-------|
| | 1 | 0 | 95 | 5 |
| | 2 | 15 | 20 | 80 |

Flow Rate: 1 mL/min

Col. Temp.: ambient

Detection: UV-Vis Abs.-Variable Wave.(UV) @ 254 nm (ambient)

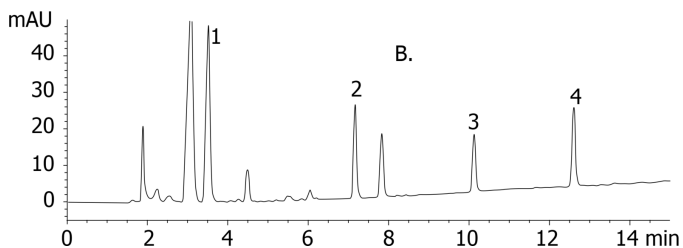
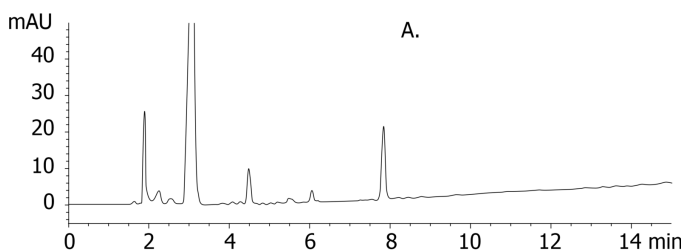
Analyst Note: SecurityGuard™ Guard Cartridge System extends column lifetime.

- SecurityGuard Cartridges, C12 4 x 3.0mm, 10/Pk Part No.: AJ0-6074

- Holder Part No.: KJ0-4282



18293



ANALYTES:

- 1 Sulfanilamide**
Retention Time: 3.49 min
- 2 Sulfathiazole**
Retention Time: 7.14 min
- 3 Sulfamethoxazole**
Retention Time: 10.11 min
- 4 Sulfaquinoxaline**
Retention Time: 12.58 min

