

# GC Application

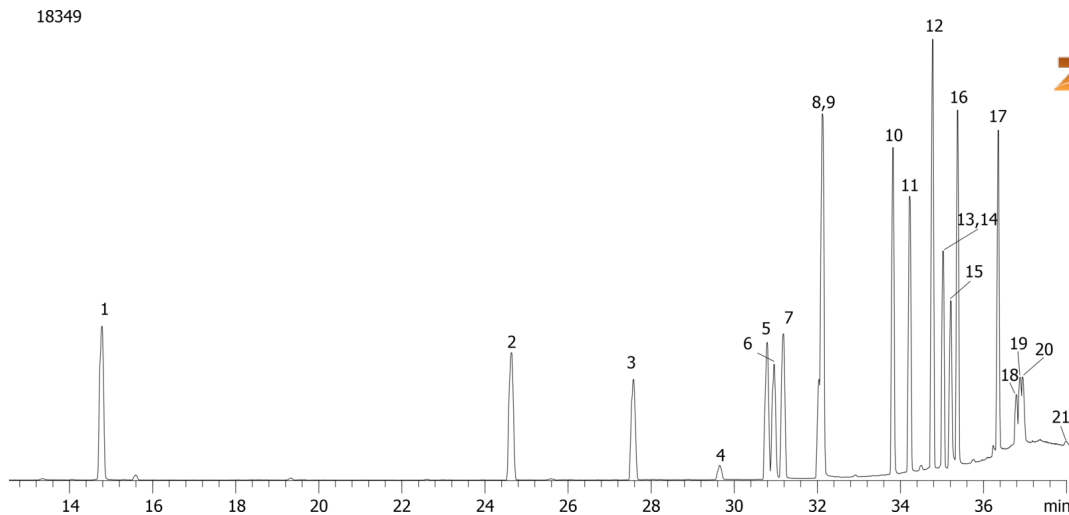
ID No.: 18349

## Halogenated Pesticide Mix # 1 on ZB-XLB

**Column:** Zebtron™ ZB-XLB, GC Cap. Column 30 m x 0.25 mm x 0.25 µm, Ea  
**Phase:** Proprietary XLB Phase  
**Dimensions:** 30 meters x 0.25 mm x 0.25 µm  
**Order No:** 7HG-G019-11  
**Oven Profile:** 40 °C for 1 min to 100 °C @ 15 °C/min to 225 °C @ 5 °C/min to 320 °C @ 15 °C/min for 5 min  
**Carrier Gas:** Constant Flow Helium, 0.8 mL/min  
**Injection:** On-Column :1 0.5 µL @ 43°C  
**Detection:** Mass Selective (MSD) (335°C)  
**Analyst Note:** Analytes 10 ppm in Acetone



Products used in this application:



## Halogenated Pesticide Mix # 1 on ZB-XLB

### ANALYTES:

- 1 Dichlobenil
- 2 BHC-gamma
- 3 Chlorothalonil
- 4 p,p'-Dicofol IP frag
- 5 Triadimenol
- 6 Captan
- 7 Folpet
- 8 Imazalil
- 9 p,p'-DDE
- 10 o,p'-Methoxychlor
- 11 Endosulfan sulfate
- 12 Methoxychlor
- 13 Fenhexamid
- 14 Dicofol
- 15 Acetamiprid
- 16 L-Cyhalothrin
- 17 Pyridaben
- 18 Cypermethrin
- 19 Cypermethrin
- 20 Cypermethrin
- 21 Pyraclostrobin

