

GC Application

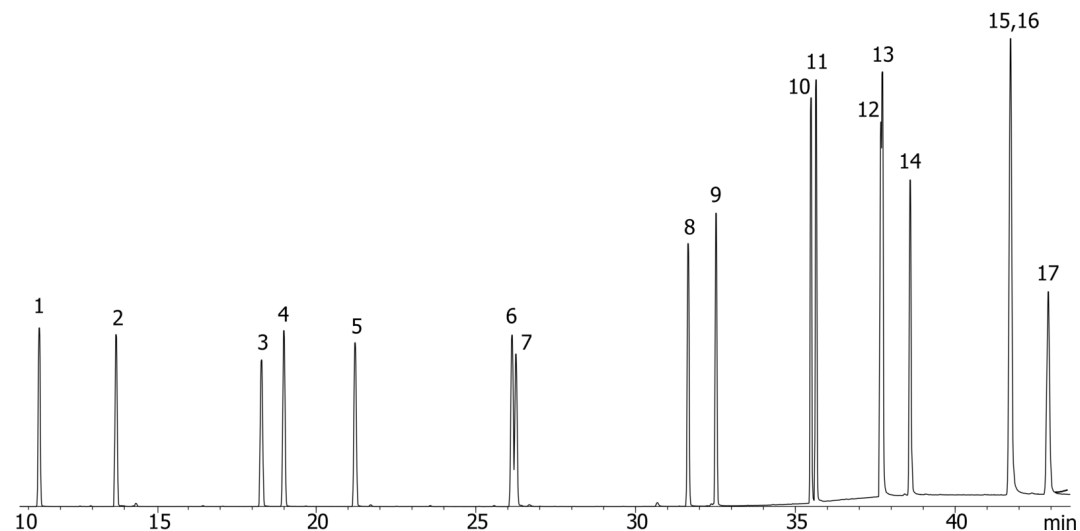
ID No.: 18412

Polynuclear Aromatic Hydrocarbons (PAHs) on ZB-35

Column: Zebtron™ ZB-35, GC Cap. Column 30 m x 0.25 mm x 0.25 μm, Ea
Phase: 35% Phenyl 65% Dimethylpolysiloxane
Dimensions: 30 meters x 0.25 mm x 0.25 μm
Order No: 7HG-G003-11
Oven Profile: 40 °C for 1 min to 100 °C @ 15 °C/min to 225 °C @ 5 °C/min to 320 °C @ 15 °C/min for 5 min
Carrier Gas: Constant Flow Helium, 0.8 mL/min
Injection: On-Column :1 0.5 μL @ 43°C
Detection: Mass Selective (MSD) (335°C)
Analyst Note: Analytes 10 ppm in Acetone



Products used in this application:



Polynuclear Aromatic Hydrocarbons (PAHs) on ZB-35

ANALYTES:

- 1 Naphthalene
- 2 2-Methylnaphthalene
- 3 Acenaphthylene
- 4 Acenaphthene
- 5 Fluorene
- 6 Phenanthrene
- 7 Anthracene
- 8 Fluoranthene
- 9 Pyrene
- 10 Benz[a]anthracene
- 11 Chrysene
- 12 Benzo[b]fluoranthene
- 13 Benzo[k]fluoranthene
- 14 Benzo[a]pyrene
- 15 Dibenz[a,h]anthracene
- 16 Indeno[1,2,3-cd]pyrene
- 17 Benzo[g,h,i]perylene

