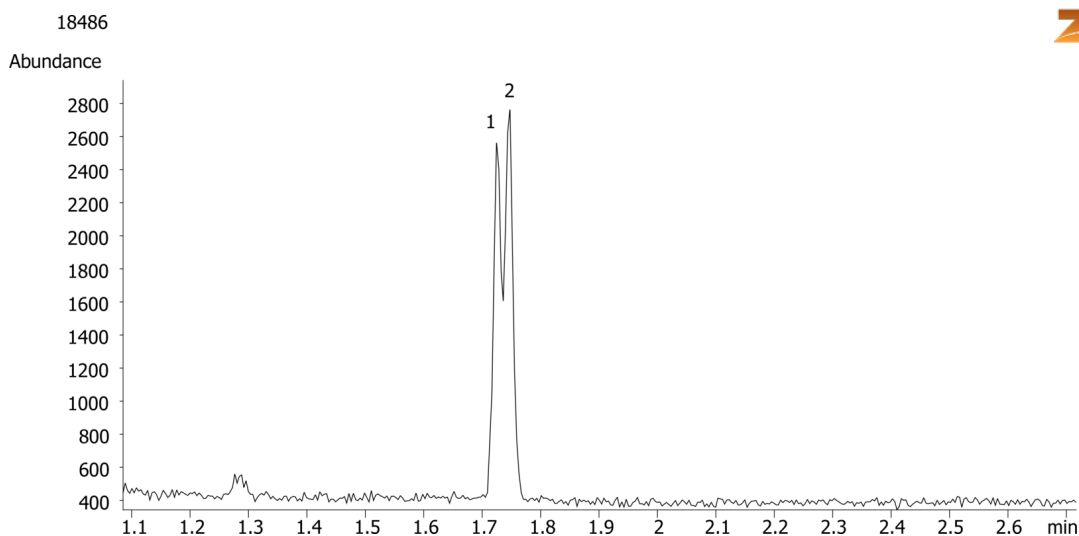


Propoxyphene from urine by Strata-XC on a ZB-Drug1**Column:** Zebron[™] ZB-Drug-1, GC Cap. Column 10 m x 0.18 mm x 0.18 μ m, Ea**Phase:** Proprietary Drug Phase**Dimensions:** 10 meters x 0.18 mm x 0.18 μ m**Order No:** 7CD-G023-08**Oven Profile:** 200 °C to 320 °C @ 25 °C/min**Carrier Gas:** Constant Flow Helium, 55 cm/sec**Injection:** Split 20:1 1 μ L @ 260°C**Detection:** Mass Selective (MSD) (320°C)**Analyst Note:** Analytes are 300ng/mL in urine
Sim ions:
(Quant ion*) D11-Propoxyphene (*64,198,213): Propoxyphene (*58,193,208)**Products used in this application:****ANALYTES:**

- 1 Propoxyphene-d11
- 2 Propoxyphene

