

## Low Concentration Spike of Baby Formula Using Melamine Screen on ZB-5ms with MSD (SIM)

**Column:** Zebtron™ ZB-5MS, GC Cap. Column 30 m x 0.25 mm x 0.25 µm, Ea

**Phase:** 5% Phenyl-Arylene 95% Dimethylpolysiloxane

**Dimensions:** 30 meters x 0.25 mm x 0.25 µm

**Order No:** 7HG-G010-11

**Oven Profile:** 75 °C for 1 min to 320 °C @ 15 °C/min for 2.67 min.

**Carrier Gas:** Constant Flow Helium, 0.9 mL/min

**Injection:** Splitless :1 1 µL @ 280°C

**Detection:** Mass Selective (MSD) (320°C)

**Analyst Note:** Low Concentration Spiked Sample of Baby Formula using Scan Mode.

Analytes were extracted via Liquid/Liquid Extraction (LLE) method, centrifuged, filtered, and derivatized with BSTFA in pyridine as per FDA Screening Method.

Cyanuric Acid (345\*, 330, 188)

Melamine (327\*, 342, 197)

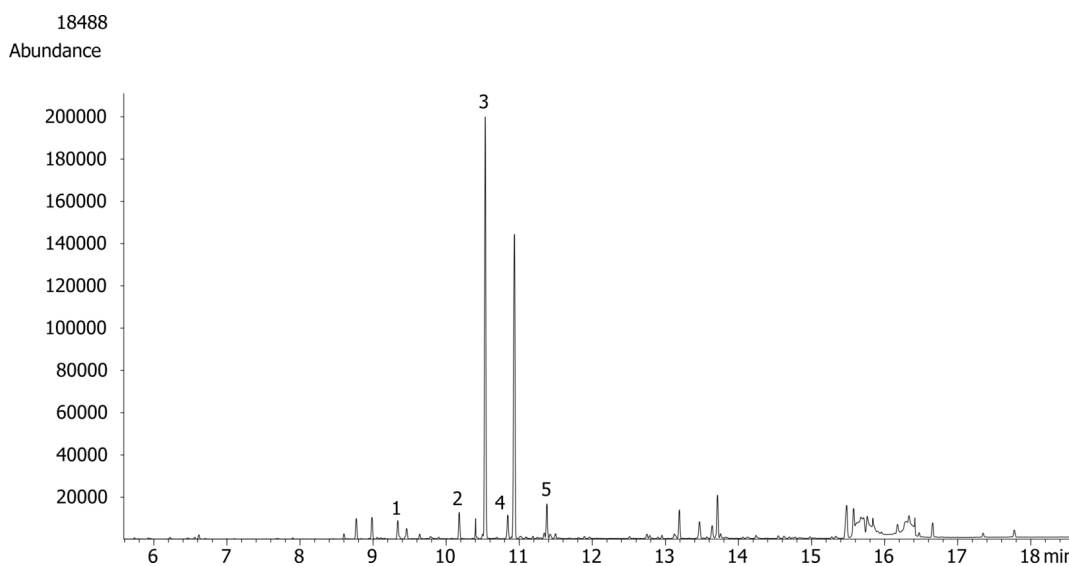
Ammelide (344\*, 329, 198)

Ammeline (328\*, 343, 285)

DACP [IS] (273\*, 288, 237)



Products used in this application:



### ANALYTES:

- 1 Cyanuric acid
- 2 Ammelide
- 3 DACP
- 4 Ammeline
- 5 Melamine

