

High Concentration Spike of Baby Formula Using Melamine Screen on ZB-5ms with MSD (SIM)

Column: Zebtron™ ZB-5MS, GC Cap. Column 30 m x 0.25 mm x 0.25 µm, Ea**Phase:** 5% Phenyl-Arylene 95% Dimethylpolysiloxane**Dimensions:** 30 meters x 0.25 mm x 0.25 µm**Order No:** 7HG-G010-11**Oven Profile:** 75 °C for 1 min to 320 °C @ 15 °C/min for 2.67 min.**Carrier Gas:** Constant Flow Helium, 0.9 mL/min**Injection:** Splitless :1 1 µL @ 280°C**Detection:** Mass Selective (MSD) (320°C)**Analyst Note:** High Concentration Sample Spike of Baby Formula using Scan Mode.

Analytes were extracted via Liquid/Liquid Extraction (LLE) method, centrifuged, filtered, and derivatized with BSTFA in pyridine as per FDA Screening Method.

Cyanuric Acid (345*, 330, 188)

Melamine (327*, 342, 197)

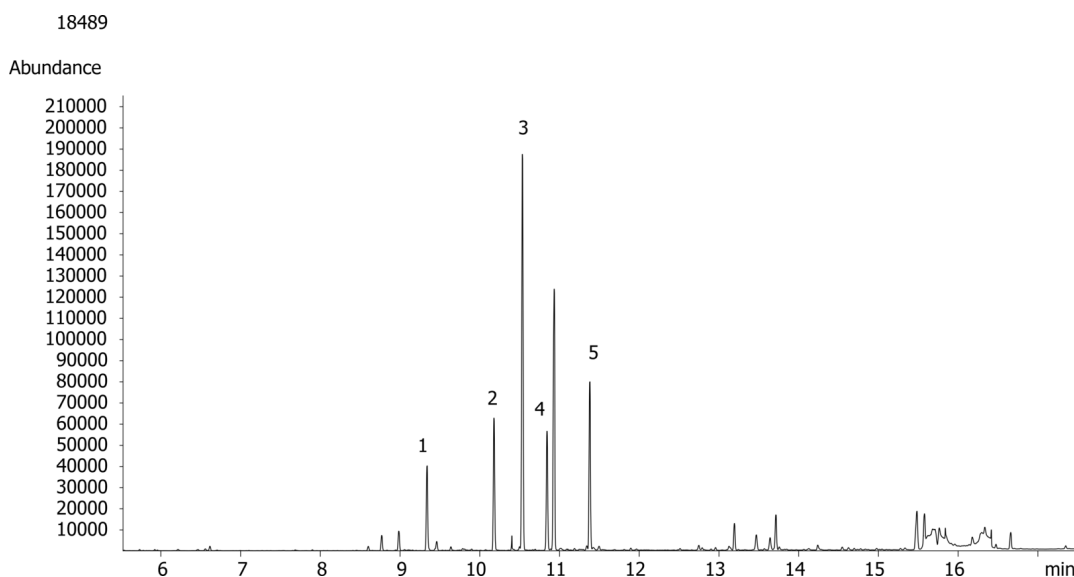
Ammelide (344*, 329, 198)

Ammeline (328*, 343, 285)

DACP [IS] (273*, 288, 237)



Products used in this application:



ANALYTES:

- 1 Cyanuric acid
- 2 Ammelide
- 3 DACP
- 4 Ammeline
- 5 Melamine

