

## Atenolol-Related Substance (European Pharmacopoeia) on Kinetex 2.6µm C18 100 x 4.6mm ID

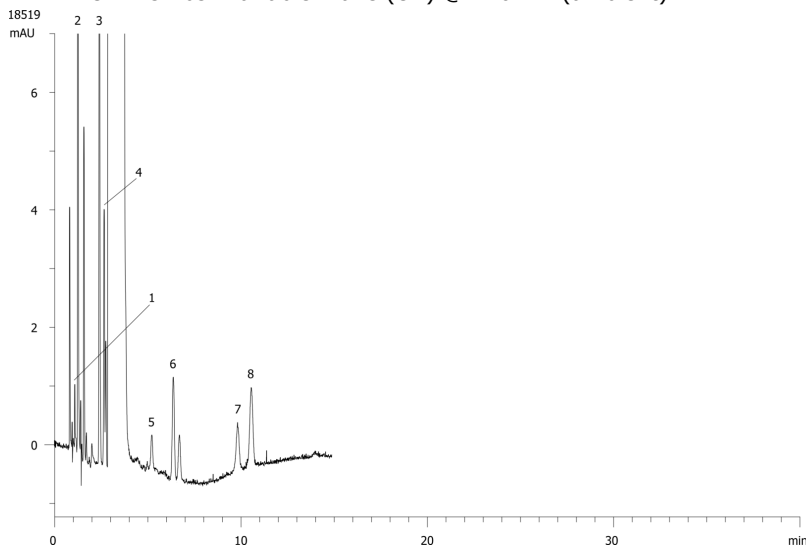
**Column:** Kinetex® 2.6 µm C18 100 Å, LC Column 100 x 4.6 mm, Ea  
**Dimensions:** 100 x 4.6 mm ID  
**Order No:** 00D-4462-E0  
**Elution Type:** Isocratic  
**Eluent A:** 12.5 mM KH<sub>2</sub>PO<sub>4</sub> in Water, pH 3.0 + 2.0g Sodium Octanesulfonate + 0.8g Tetrabutyl Am  
**Eluent B:** Methanol  
**Eluent C:** THF  
**Gradient Profile:**

| Step No. | Time (min) | Pct A | Pct B | Pct C |
|----------|------------|-------|-------|-------|
| 1        | 0          | 80    | 18    | 2     |

**Flow Rate:** 1 mL/min  
**Col. Temp.:** ambient  
**Detection:** UV-Vis Abs.-Variable Wave.(UV) @ 226 nm (ambient)



Products used in this application:



### ANALYTES:

- 1** Impurity B  
Retention Time: 1.24 min
- 2** Impurity A  
Retention Time: 1.7 min
- 3** Impurity J  
Retention Time: 2.396 min
- 4** Impurity I  
Retention Time: 2.65 min
- 5** Impurity D and E  
Retention Time: 5.2 min
- 6** Impurity F  
Retention Time: 6.35 min
- 7** Impurity G  
Retention Time: 9.8 min
- 8** Impurity H  
Retention Time: 10.54 min

