

# HPLC Application

ID No.: 18542

## Proprietary Screening Mixture on Kinetex 2.6µm C18 50 x 2.1mm ID (without KrudKatcher Ultra)

**Column:** Kinetex® 2.6 µm C18 100 Å, LC Column 50 x 2.1 mm, Ea

**Dimensions:** 50 x 2.1 mm ID

**Order No:** 00B-4462-AN

**Elution Type:** Gradient

**Eluent A:** Water with 0.1% Formic acid

**Eluent B:** Acetonitrile with 0.1% Formic Acid

<b>Gradient Profile:</b>	<b>Step No.</b>	<b>Time (min)</b>	<b>Pct A</b>	<b>Pct B</b>
	<b>1</b>	0	95	5
	<b>2</b>	1.75	20	80
	<b>3</b>	2.5	20	80
	<b>4</b>	2.51	95	5

**Flow Rate:** 0.8 mL/min

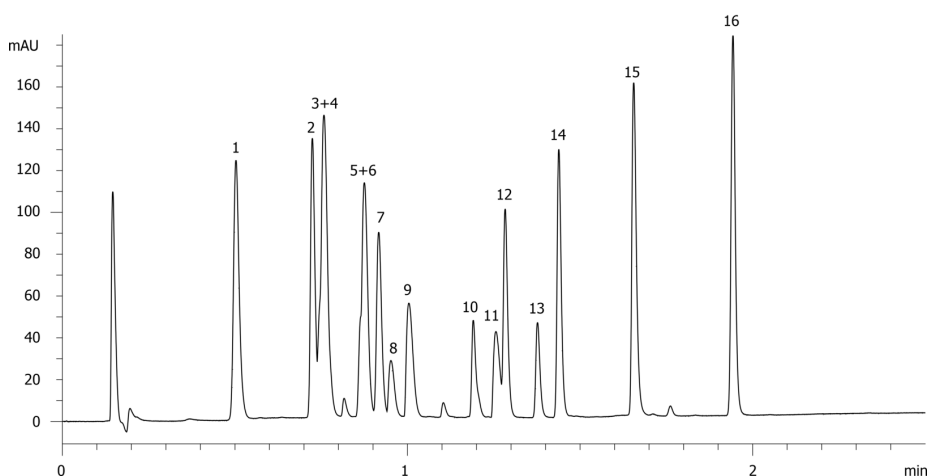
**Col. Temp.:** ambient

**Detection:** UV-Vis Abs.-Variable Wave.(UV) @ 254 nm (ambient)

18542



Products used in this application:



### ANALYTES:

**1** 16-Component Proprietary Mixture

Retention Time: 0.503 min

