

Tea Extracts / Catechins on Kinetex 2.6µm C18, 100 x 4.6mm ID at 1.2mL/min

Column: Kinetex® 2.6 µm C18 100 Å, LC Column 100 x 4.6 mm, Ea

Dimensions: 100 x 4.6 mm ID

Order No: 00D-4462-E0

Elution Type: Gradient

Eluent A: 0.1% phosphoric acid/water

Eluent B: 0.1% phosphoric acid/acetonitrile

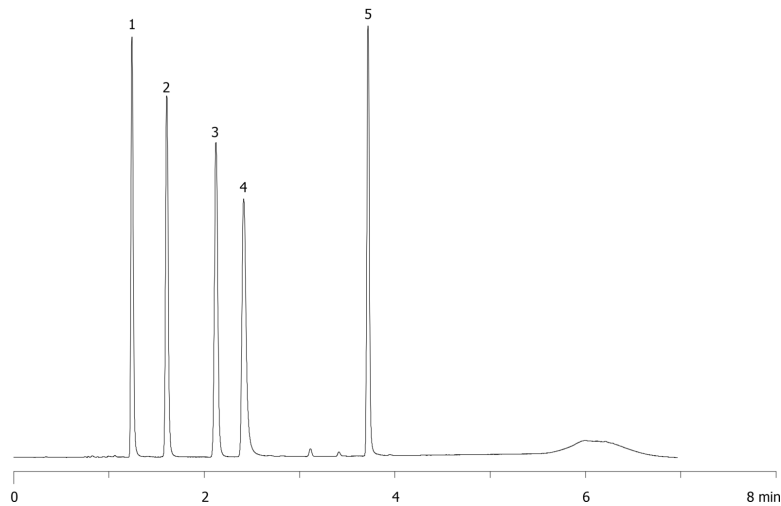
Gradient Profile:	Step No.	Time (min)	Pct A	Pct B
	1	0	85	15
	2	0.67	85	15
	3	4	65	35
	4	5	10	90
	5	5.01	85	15
	6	8	85	15

Flow Rate: 1.2 mL/min

Col. Temp.: ambient

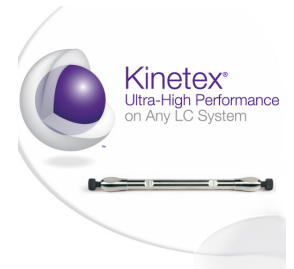
Detection: UV-Vis Abs.-Diode Array (PDA) @ 215 nm (ambient)

18547



ANALYTES:

- 1** Epigallocatechin
Retention Time: 1.24 min
- 2** Catechin
Retention Time: 1.605 min
- 3** Epicatechin
Retention Time: 2.122 min
- 4** Epigallocatechin gallate
Retention Time: 2.413 min
- 5** Epicatechin gallate
Retention Time: 3.717 min



Products used in this application:

