

## QC Test Chromatogram (Agilent 1100) - Kinetex 2.6µm C18 50 x 4.6mm ID

**Column:** Kinetex® 2.6 µm C18 100 Å, LC Column 50 x 4.6 mm, Ea

**Dimensions:** 50 x 4.6 mm ID

**Order No:** 00B-4462-E0

**Elution Type:** Isocratic

**Eluent A:** Acetonitrile

**Eluent B:** Water

Gradient	Step No.	Time (min)	Pct A	Pct B
Profile:	1	0	50	50

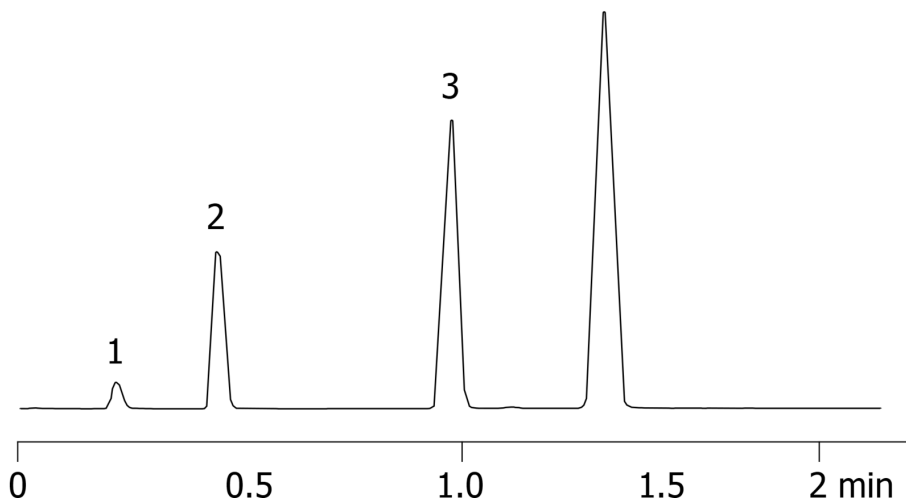
**Flow Rate:** 2.35 mL/min

**Col. Temp.:** ambient

**Detection:** UV-Vis Abs.-Variable Wave.(UV) @ 254 nm (ambient)

18565

4



### ANALYTES:

- 1** Uracil  
Retention Time: 0.22 min
- 2** Acetophenone  
Retention Time: 0.45 min
- 3** Toluene  
Retention Time: 0.98 min
- 4** Naphthalene  
Retention Time: 1.32 min



Products used in this application:

