

HPLC Application

ID No.: 18716

Extraction of Healthcare Opiates using strata X-C on Kinetex 2.6µm C18 50 x 2.1mm ID by LC/MS

Column: Kinetex® 2.6 µm C18 100 Å, LC Column 50 x 2.1 mm, Ea

Dimensions: 50 x 2.1 mm ID

Order No: 00B-4462-AN

Elution Type: Gradient

Eluent A: 0.1% Formic acid and 5 mM ammonium acetate in H₂O

Eluent B: 0.1% Formic acid and 5 mM ammonium acetate in 50-50ACN-Methanol

Gradient Profile:	Step No.	Time (min)	Pct A	Pct B
	1	0	95	5
	2	0.24	95	5
	3	3.36	20	80
	4	3.37	5	95
	5	3.68	5	95
	6	3.69	95	5
	7	5.55	95	5

Flow Rate: 400 µL/min

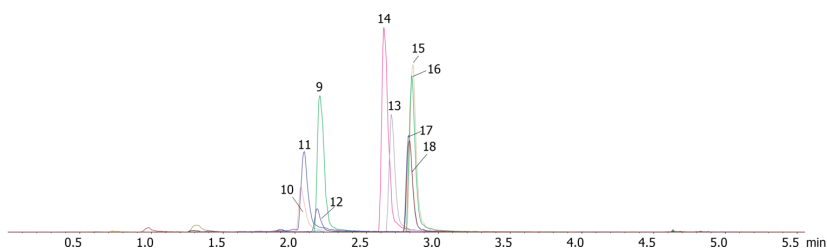
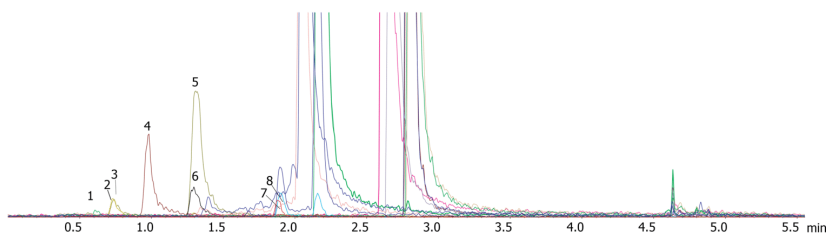
Col. Temp.: ambient

Detection: Mass Spectrometer (MS) @ amu (ambient)

18716



Products used in this application:



Extraction of Healthcare Opiates using strata X-C on Kinetex 2.6 μ m C18 50 x 2.1mm ID by LC/MS

ANALYTES:

- 1 Normorphine
- 2 Morphine
- 3 Morphine-d3
- 4 Oxymorphone
- 5 Hydromorphone
- 6 Hydromorphone-d6
- 7 Codeine-d6
- 8 Codeine
- 9 O-Desmethyltramadol
- 10 Oxycodone-d6
- 11 Oxycodone
- 12 Hydrocodone
- 13 N-Desmethyltramadol
- 14 Tramadol
- 15 Normeperidine
- 16 Normeperidine-d4
- 17 Meperidine-d4
- 18 Meperidine

