

Water-soluble vitamins on Kinetex 2.6µm HILIC 150 x 4.6mm

Column: Kinetex® 2.6 µm HILIC 100 Å, LC Column 150 x 4.6 mm, Ea

Dimensions: 150 x 4.6 mm ID

Order No: 00F-4461-E0

Elution Type: Gradient

Eluent A: Acetonitrile

Eluent B: 100mM Ammonium formate pH 3.2

Eluent C: Water

Gradient Profile:	Step No.	Time (min)	Pct A	Pct B	Pct C
	1	0	90	10	0
	2	5	90	10	0
	3	20	50	10	40

Flow Rate: 1 mL/min

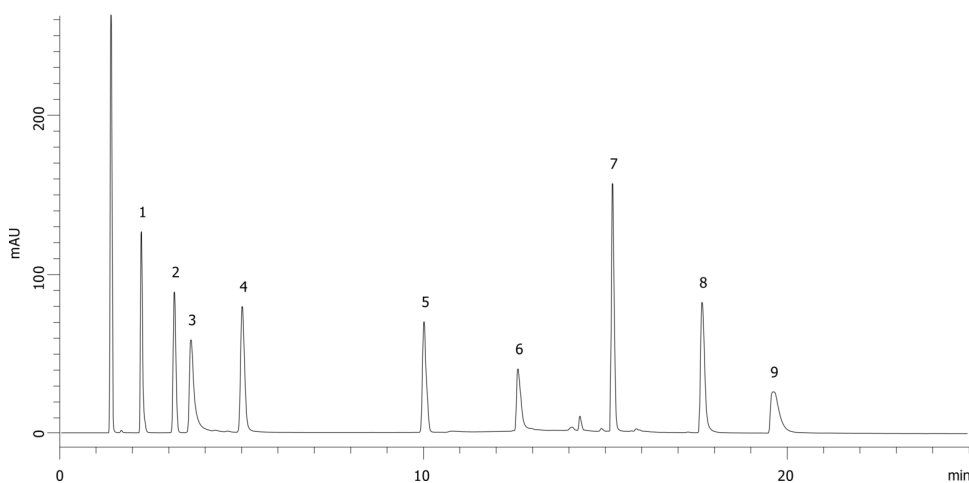
Col. Temp.: ambient

Detection: UV-Vis Abs.-Variable Wave.(UV) @ 260 nm (ambient)

18842



Products used in this application:



ANALYTES:

- 1 Nicotinamide
- 2 PABA
- 3 Pyridoxine
- 4 Riboflavin
- 5 Nicotinic acid
- 6 Ascorbic acid
- 7 Folic acid
- 8 Vitamin B12
- 9 Thiamine

