

HPLC Application

ID No.: 18866

Terfenadine on Lux 5 µm Cellulose-1 by Chiral SFC (loading and scale up)

Column: Lux[®] 5 µm Cellulose-1, LC Column 250 x 4.6 mm, Ea

Dimensions: 250 x 4.6 mm ID

Order No: 00G-4459-E0

Elution Type: Isocratic

Eluent A: Methanol with 0.1% DEA

Eluent B: CO₂

Gradient Profile:	Step No.	Time (min)	Pct A	Pct B
	1	0	25	75

Flow Rate: 2.5 mL/min

Col. Temp.: 35 °C

Detection: UV-Vis Abs.-Variable Wave.(UV) @ 220 nm (ambient)

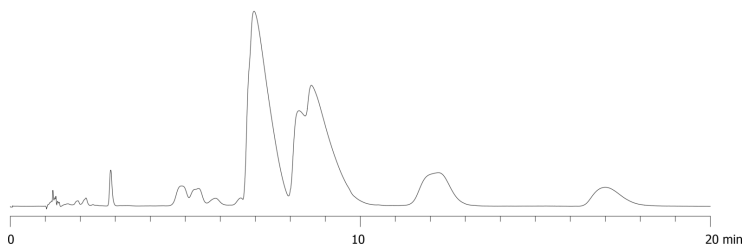
Analyst Note: Application using combination of UV-Vis detector (upper trace) and PDR-Chiral Advanced Laser Polarimeter (lower trace) © 2015 Phenomenex, Inc.

1.5mg in 50µL on-column injection of Terfenadine.

18866



Products used in this application:



ANALYTES:

1 Terfenadine

2 Terfenadine