

## High MW proteins on BioSep4000 (2) and TSK

**Column:** BioSep™ 5 µm SEC-s4000 500 Å, LC Column 300 x 7.8 mm, Ea

**Dimensions:** 300 x 7.8 mm ID

**Order No:** 00H-2147-K0

**Elution Type:** Isocratic

**Eluent A:** 100mM Phosphate buffer pH 6.8

Gradient	Step No.	Time (min)	Pct A
Profile:	1	0	100

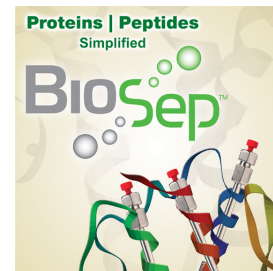
**Flow Rate:** 1 mL/min

**Col. Temp.:** ambient

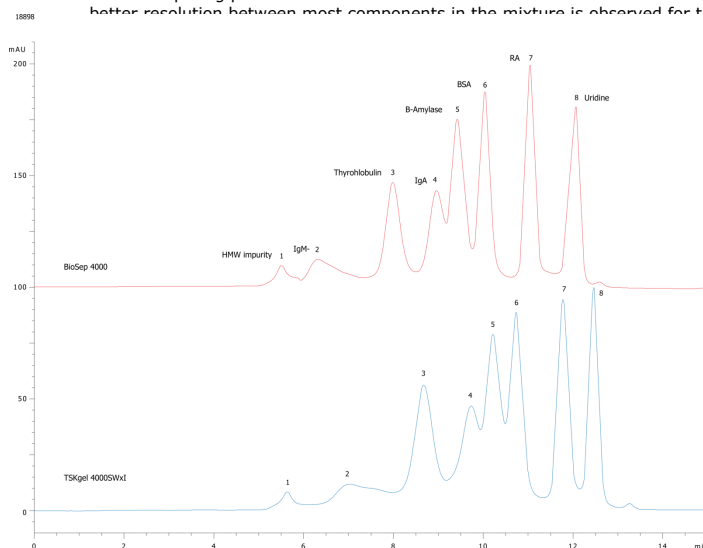
**Detection:** UV-Vis Abs.-Variable Wave.(UV) @ 220 nm (ambient)

**Analyst Note:** Application Focus: To compare and contrast BioSep4000 and a leading competitor large range GFC column (TSKgel SWxl 4000)

Using a standard mixture of high molecular weight proteins optimized for the 4000 series separation, the BioSep 4000 and a leading competitor column (TSKgel SWxl 4000) were compared using standard conditions (100 mM phosphate pH 6.8, 1 mL/min). Similar amounts of the standard were injected onto each column. When comparing peak resolutions between columns certain observations can be made regarding the performance of the two columns. In general, better resolution between most components in the mixture is observed for the BioSep 4000 column versus the competitor design having a smaller



Products used in this application:



### ANALYTES:

- 1 IgM
- 2 Thyroglobulin
- 3 IgA
- 4 beta-Amylase
- 5 BSA
- 6 Ribonuclease A
- 7 Uridine

