

# HPLC Application

ID No.: 18952

## Indapamide on Lux 5 µm Cellulose-2 by Chiral SFC

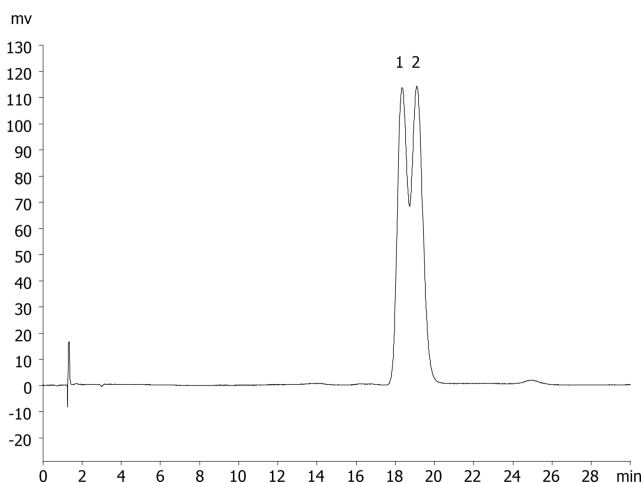
**Column:** Lux<sup>®</sup> 5 µm Cellulose-2, LC Column 250 x 4.6 mm, Ea  
**Dimensions:** 250 x 4.6 mm ID  
**Order No:** 00G-4457-E0  
**Elution Type:** Isocratic  
**Eluent A:** Methanol with 0.1% DEA  
**Eluent B:** Carbon Dioxide  
**Gradient**

Step No.	Time (min)	Pct A	Pct B
1	0	20	80

**Profile:**  
**Flow Rate:** 1 mL/min  
**Col. Temp.:** 35 °C  
**Detection:** UV-Vis Abs.-Diode Array (PDA) @ 220 nm (ambient)  
**Analyst Note:** Application using Jasco SFC instrument courtesy of Cephalon, Inc.  
18952



Products used in this application:



### ANALYTES:

- 1 Indapamide
- 2 Indapamide