

HPLC Application

ID No.: 18961

Naringenin on Lux 5 μ m Cellulose-2 by Chiral SFC

Column: Lux[®] 5 μ m Cellulose-2, LC Column 250 x 4.6 mm, Ea

Dimensions: 250 x 4.6 mm ID

Order No: 00G-4457-E0

Elution Type: Isocratic

Eluent A: Methanol with 0.1% DEA

Eluent B: Carbon Dioxide

Gradient Profile:	Step No.	Time (min)	Pct A	Pct B
	1	0	20	80

Flow Rate: 1 mL/min

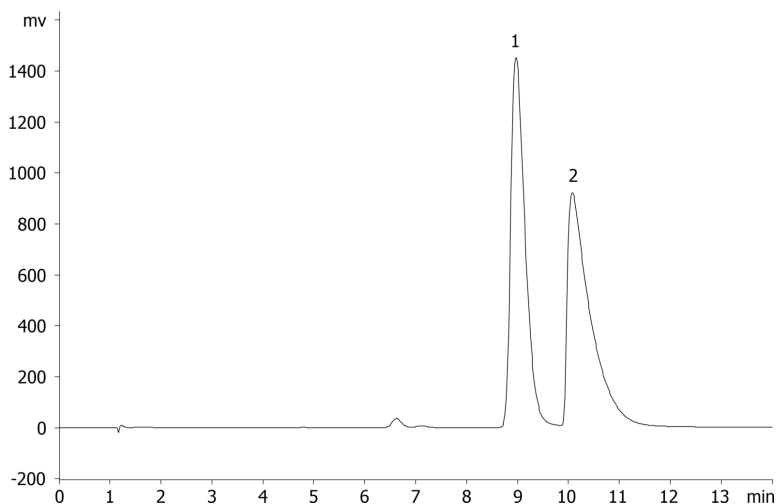
Col. Temp.: 35 °C

Detection: UV-Vis Abs.-Diode Array (PDA) @ 220 nm (ambient)

Analyst Note: Application using Jasco SFC instrument courtesy of Cephalon, Inc.
18961



Products used in this application:



ANALYTES:

- 1 Naringenin
- 2 Naringenin