

Linear MW Calibration on BioSep-SEC-S3000(2), Med Range MW

Column: BioSep™ 5 µm SEC-s3000 290 Å, LC Column 300 x 7.8 mm, Ea

Dimensions: 300 x 7.8 mm ID

Order No: 00H-2146-K0

Elution Type: Isocratic

Eluent A: 10mM Tris, 150mM NaCl, pH 7.4 □□

Gradient Profile:	Step No.	Time (min)	Pct A
	1	0	100

Flow Rate: 1 mL/min

Col. Temp.: ambient

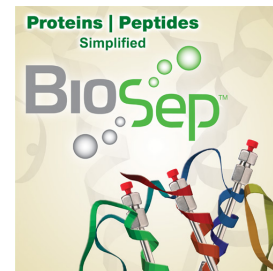
Detection: UV-Vis Abs.-Variable Wave.(UV) @ 214 nm (ambient)

Detector Info: 3rd order of polynomial MW calibration curves

Analyst Note: SecurityGuard™ Guard Cartridge System extends column lifetime.

- SecurityGuard Cartridges, GFC 3000 4 x 3.0mm ID, 10/Pk Part No.: AJ0-4488

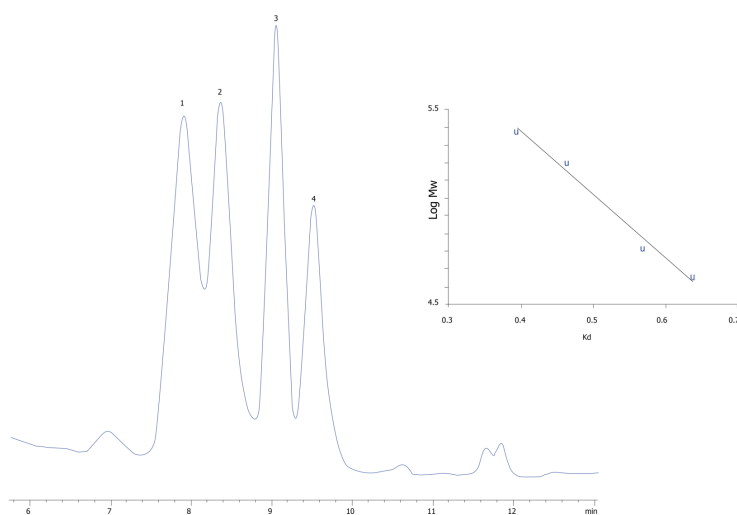
- Holder Part No.: KJ0-4282



Products used in this application:



18963



ANALYTES:

- 1** IgA
Retention Time: 7.9 min
- 2** beta-Amylase
Retention Time: 8.36 min
- 3** BSA
Retention Time: 9.05 min
- 4** Ovalbumin
Retention Time: 9.51 min

